

5 Star Hotel & Resort

Cox's Bazar



Rhine
Garden Inn

Executive Summary

- The **Rhine Garden Inn**, Cox's Bazar is one grand luxury icon & leisure escape in the hotel history of Bangladesh. It stands out of all hotels in Bangladesh in various aspects. Beside the longest sandy beach of the world on one side and hilly portrait on the opposite, it suits the life center with cutting edge modern faculties. Using state of the art technology and sustainable architecture (Eco friendly & carbon-neutral establishment)16 stored grand hotel is designed for the best to protect from natural calamities like 15 feet height tsunami, 7.5 Richer scale earth quake & 260KM/hr air velocity. In all phase Hilton Garden Inn & **Rhine Garden Inn** break the conventionality and offers the opportunity of top-nudge business model the this country has ever offered.
- Manynewhotels are at their construction phases in Cox'sbazar but hotels with such top class facilities and amenities is not yet been thought by any hotel developers. Here, **Rhine Garden Inn** open a new doorway by not only ensuring the highest class facilities but also breaking the conventional thinking about the hotels in Cox'sbazar. Plus, the lucrative feathers & viability of the project antics the world's largest hotel chain Group "Marriot" The Hilton Garden inn, to involve in this grand project which is another landmark in the Hotel industry of Bangladesh.
- The project has already availed all the regulatory and legal clearance & the civil construction phase is going on. The expected time of completion of this project December 2028.
- Someof the recent surveys reported that the Asian country as well as the south Asian's are top tourist destinations for millions of tourists from all over the world. Being the host of the unbroken longest sea beach of world, Cox'sbazar of Bangladesh was continuously rated as no 1 natural wonder in worldwide voting for world natural wonders-this unparalleled position introduced Cox'sbazar as most exciting undiscovered secret treasure for tourists. From the very beginning ,Cox'sbazar is the main tourist destination of the nation. In last 5-7 years a large scale of tourism service development has taken place in Cox'sbazar. Currently there are more than 100 establishments OS standard hotels, motels, guest houses along with some star rated hotels providing accommodation facilities for 60,000 tourists a week, But in peak seasons and holidays the demands reach for more then 300,000 a week. Its estimated that 60% of the visitors in the cox's Bazar belongs to the holiday makers group, for real holidays this group instinctively look for reuxing accommodation and exciting outdoor activities in the heavenly places like Cox'sbazar. Against the high demand of world class beach hotel facilities, unfortunately no true luxury hotel is still developed out there. Its been predicted that next couple of years Cox'sbazar will be one of the top destinations for the local and international travelers.

5 Star Hotel & Resort

Cox's Bazar

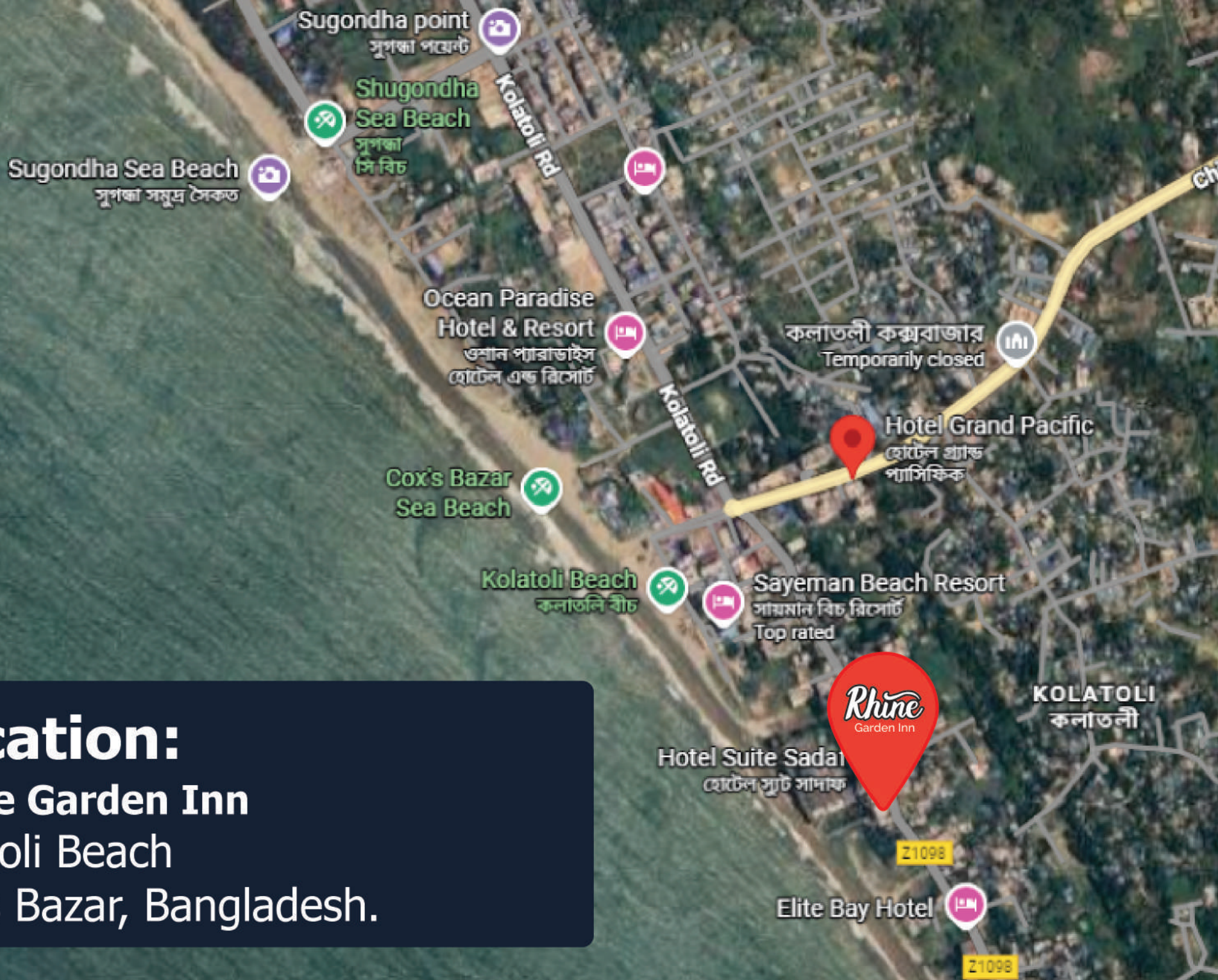


Location:

Rhine Garden Inn

Kolatoli Beach

Cox's Bazar, Bangladesh.



Facilities & Amenities

| | |
|---------------------------|---|
| Project | : 16 Storied 5-Star Chain Hotel with all type of modern facilities. |
| Area's | : 28500 Sq. Ft. each floor |
| Common Facilities | : 12 Lift, 2 Escalator, 2 Sufficient power Generator, 4 Staircase, Spacious Lobby all around, Lily pond, Fountain, Aquarium, modern and fancy lighting,etc. |
| Lift Using Detail; | |
| a) Lift 1 & 2 | : For Cineplex straight away to top floor |
| b) Lift 3 | : Cargo-all floor |
| c) Lift 4 to 10 | : Passenger purpose-all floor |
| d) Lift 11 7 12 | : Top floor swimming pool users only-all floor |
| Note: | All lift are 8 persons |
| | Escalator Using Detail Ground floor to Mezzanine/1st floor |
| | Stair Using Detail All Stair Ground floor to Top floor |

Floor Detail and Facilities

Ground Floor

Facilities : Swimming, Dolphin Ride, Banquet Hall Steam Bath, ATM Booth, Parking, Reception etc.

a. Swimming pool with all facilities : = (+-)6,400Sft.

Only Swimming pool : = (+-) 1,200 Sft.

b. Dolphin Ride with Gallery : = (+-) 16,000 Sft.

c. Banquet Hall with kitchen : = (+-) 3,200 Sft.

d. Steam bath area : = (+-) 700 Sft.

e. Escalator & Aquarium area : = (+-) 2,400 Sft.

f. Lift Lobby Area : = (+-) 900 Sft.

g. Car Parking : = 50 nos

Mezzanine/1st Floor

Facilities : Reception Lounge Zone, Admin Office, Mosque, Shop Area, Gym, saloon, Laundry, Massage Parlor, Beauty Parlor, SPA, Bar, etc

a. Reception Lounge Zone with office : = (+-) 8,000 Sft (Triple Height)

b. Mosque : = (+-) 1,500 Sft

c. Shop area : = (+-) 1,000 Sft

d. SPA area : = (+-) 1,125 Sft

e. Massage Parlor : = (+-) 1,125 Sft

f. Laundry : = (+-) 600 Sft

g. Gents Gym : = (+-) 500 Sft

h. Ladies Gym : = (+-) 400 Sft

i. Saloon : = (+-) 800 Sft

j. Escalator & Aquarium area : = (+-) 2,400 Sft

h. Lift Lobby Area : = (+-) 900 Sft

2nd Floor

Facilities : Economy Room, Economy Restaurant, Service & Store room, Open Sitting area.Green area, water lily pond, etc.

a. Economy room detail:

i) Total Room with Toilet

:= 68nos

With Ver

:= 28 nos

Without Ver

:= 40 nos

ii) Room size

:= (+-) 200-250 Sft

b. Economy Restaurant for all

:= (+-) 2,500 Sft

c. water lily pond

:= (+-) 1,200 Sft

d. Lift Lobby Area

:= (+-) 900 Sft (Etc Floor)

e. 3 fit wide Live fishing Lake for
each corridor

:= (+-) 3,500 Sft

3rd Floor

| | |
|---|--|
| Facilities | : Superior Deluxe Suit, Deluxe Suit, Economy Deluxe Suit, water lily pond, etc |
| a. Superior Deluxe Suit detail | i. Total suit with all : = 05 nos with ver : = all ii. Suit size : = (+-) 1050-1100 Sft |
| b. Deluxe Suit detail | i. Total suit with all : = 25 nos with ver : = 18 nos without Ver : = 07 nos ii. Suit size : = (+-) 500-550 Sft |
| c. Economy Suit detail | i. Total suit with all : = 09 nos with ver : = 03 nos without Ver : = 06 nos ii. Room size : = (+-) 400-450 Sft |
| d. water lily pond | : = (+-) 1200 Sft |
| e. Lift Lobby Area | : = (+-) 900 Sft |
| f. 3 fit wide Live fishing Lake for each corridor both side | : = (+-) 3,500Sft |

4thFloor

| | | |
|---|---|------------------------|
| Facilities | : Superior Deluxe Suit, Deluxe Suit, Economy Deluxe Suit, water lily pond, etc. | |
| a. Superior Deluxe Suit detail | i. Total suit with all | : = 05 nos |
| | with ver | : = all |
| | ii. Suit size | : = (+-) 1050-1100 Sft |
| b. Deluxe Suit detail | i. Total suit with all | : = 25 nos |
| | with ver | : = 18 nos |
| | without Ver | : = 07 nos |
| | ii. Suit size | : = (+-) 500-550 Sft |
| c. Economy Deluxe Suit detail | i. Total suit with all | : = 09 nos |
| | with ver | : = 03 nos |
| | without Ver | : = 06 nos |
| | ii. Room size | : = (+-) 400-450 Sft |
| | d.water lily pond | : = (+-) 1200 Sft |
| e.Lift Lobby Area | | : = (+-) 900 Sft |
| f. 3 fit wide Live fishing Lake for each corridor both side | | : = (+-) 3,500Sft |

5th Floor

| | |
|--|---|
| Facilities | : Presidential Suit (Lower Part), Superior Suit, Deluxe Suit, water lily pond, etc. |
| a. Presidential Suit (Lower Part) detail | i. Total suit with all as shown : = 02 nos |
| | ii. Suit size : = (+-) 2500-2800 Sft |
| b. Superior Suit detail | i. Total suit with all : = 16 nos |
| | Toilet : = 02 nos |
| | with Ver : = 09 nos |
| | without Ver : = 07 nos |
| | ii. Suit size : = (+-) 1050-1100 Sft |
| c. Deluxe Suit detail | i. Total suit with all : = 01 nos |
| | without Ver : = 01 nos |
| | ii. Room size : = (+-) 500-550 Sft |
| | d. water lily pond : = (+-) 1200 Sft |
| e. Lift Lobby Area | : = (+-) 900 Sft |
| f. 3 ft wide Live fishing Lake for each corridor both side | : = (+-) 3,500 Sft |

6th Floor

| | |
|--|---|
| Facilities | : Presidential Suit (Lower Part), Superior Suit, Deluxe Suit, water lily pond, etc. |
| a. Presidential Suit (Upper Part) detail | i. Total suit with all as shown : = 02 nos |
| | ii. Suit size : = (+-) 2500-2800 Sft |
| b. Superior Suit detail | i. Total suit with all : = 16 nos |
| | Toilet : = 02 nos |
| | with Ver : = 09 nos |
| | without Ver : = 07 nos |
| | ii. Suit size : = (+-) 1050-1100 Sft |
| c. Deluxe Suit detail | i. Total suit with all : = 01 nos |
| | without Ver : = 01 nos |
| | ii. Room size : = (+-) 500-550 Sft |
| d. water lily pond | : = (+-) 1200 Sft |
| e. Lift Lobby Area | : = (+-) 900 Sft |
| f. 3 ft wide Live fishing Lake for each corridor both side | : = (+-) 3,500Sft |

7th Floor

Facilities : Casino Club Area, Banquet Hall/Restaurant & Indoor Amusement Park

a. Casino Club area detail

i. Floor Height 16'-0" with all side Mezzanine floor : = 800 nos

ii. Size (Double Height) : (+-) 8,000 Sft

b. Banquet Hall/Restaurant detail

i. Floor Height 16'-0' : -

ii. Size : = (+-) 5250 Sft. (Duplex)

d.water lily pond : = (+-) 1200 Sft

e.Lift Lobby Area : = (+-) 900 Sft

f. 3 fit wide Live fishing Lake for each corridor both side : = (+-) 3,500Sft

g. Indoor Amusement Park : = (+-) 13250 Sft(Double Height)

8th Floor

| | |
|---|---|
| Facilities | : Presidential Suit (Lower Part), Superior Suit, Deluxe Suit, water lily pond, etc. |
| a. Presidential Suit (Upper Part) detail | i. Total suit with all as shown : = 02 nos |
| | ii. Suit size : = (+-) 2500-2800 Sft |
| b. Superior Suit detail | i. Total suit with all : = 16 nos |
| | Toilet : = 02 nos |
| | with Ver : = 09 nos |
| | without Ver : = 07 nos |
| | ii. Suit size : = (+-) 1050-1100 Sft |
| c. Deluxe Suit detail | i. Total suit with all : = 01 nos |
| | without Ver : = 01 nos |
| | ii. Room size : = (+-) 500-550 Sft |
| d. water lily pond | : = (+-) 1200 Sft |
| e. Lift Lobby Area | : = (+-) 900 Sft |
| f. 3 fit wide Live fishing Lake for each corridor both side | : = (+-) 3,500Sft |

9th Floor

| | |
|---|---|
| Facilities | : Presidential Suit (Lower Part), Superior Suit, Deluxe Suit, water lily pond, etc. |
| a. Superior Max Suit detail | i. Total suit with all as shown : = 02 nos |
| | ii. Suit size : = (+-) 2500-2800 Sft |
| b. Superior Suit detail | i. Total suit with all : = 16 nos |
| | Toilet : = 02 nos |
| | with Ver : = 09 nos |
| | without Ver : = 07 nos |
| | ii. Suit size : = (+-) 1050-1100 Sft |
| c. Deluxe Suit detail | i. Total suit with all : = 01 nos |
| | without Ver : = 01 nos |
| | ii. Room size : = (+-) 500-550 Sft |
| d. water lily pond | : = (+-) 1200 Sft |
| e. Lift Lobby Area | : = (+-) 900 Sft |
| f. 3 fit wide Live fishing Lake for each corridor both side | : = (+-) 3,500Sft |

10th Floor

| | |
|---|--|
| Facilities | : Presidential Suit (Upper Part), Suit, Deluxe Suit, water lily pond, etc. |
| a. Presidential Suit (Upper Part) detail | i. Total suit with all as shown : = 02 nos |
| | ii. Suit size : = (+-) 2500-2800 Sft |
| b. Superior Suit detail | i. Total suit with all : = 16 nos |
| | Toilet : = 02 nos |
| | with Ver : = 09 nos |
| | without Ver : = 07 nos |
| | ii. Suit size : = (+-) 1050-1100 Sft |
| c. Deluxe Suit detail | i. Total suit with all : = 01 nos |
| | without Ver : = 01 nos |
| | ii. Room size : = (+-) 500-550 Sft |
| d. water lily pond | : = (+-) 1200 Sft |
| e. Lift Lobby Area | : = (+-) 900 Sft |
| f. 3 fit wide Live fishing Lake for each corridor both side | : = (+-) 3,500Sft |

11th Floor

| | | |
|---|--|------------------------|
| Facilities | : Royal King Suit(Lower Part), Presidential Suit (Lower Part) Suit, Deluxe Suit, water lily pond, etc. | |
| a. Royal King Suit(Lower Part) detail | i. Total suit with all as shown | : = 01 nos |
| | ii. Suit size | : = (+-) 5500-5600 Sft |
| b. Presidential Suit (Lower Part) detail | i. Total suit with all as shown | : = 01 nos |
| | ii. Suit size | : = (+-) 2500-2800Sft. |
| c. Superior Suit detail | i. Total suit with all | : = 01 nos |
| | Toilet | : = 02 nos |
| | with ver | : = 07 nos |
| | without Ver | : = 07 nos |
| | ii. Suit size | : = (+-) 1050-1100 Sft |
| d. Deluxe Suit detail | i. Total suit with all | : = 01 nos |
| | without Ver | : = 01 nos |
| | ii. Room size | : = (+-) 500-550 Sft |
| e. water lily pond | | : = (+-) 1200 Sft |
| f. Lift Lobby Area | | : = (+-) 900 Sft |
| g. 3 fit wide Live fishing Lake for each corridor both side | | : = (+-) 3,500Sft |

13th Floor

Facilities

: DJ

a. DJ Bar area detail

i. Floor Height 14Fit. : -

ii. Space size : = (+-) 10,500 Sft

b. Disco Party Area detail

i. Floor Height 14'-0". : -

ii. Space size : = (+-) 10,500 Sft.

c. Lift Lobby Area

: = (+-) 900 Sft

14th Floor

| | | |
|---|---|---------------------|
| Facilities | : Cineplex, Food Court, Amateur Games/Stadium, Conference Hall, BollingSpace, Mini Theater, Bar, Ladies Recreation Area. etc. | |
| a. Cineplex Area detail | i. Floor Height as required | :- |
| | ii. Space size | : = (+-) 5,500 Sft. |
| | iii. Capacity | : = (+-) 600 Seats |
| b. Food Court Area detail | i. Floor Height normal | : - |
| | ii. Space size | : = (+-) 4,100 Sft. |
| c. Amateur Games/Stadium Area detail | i. Floor Height Double | : - |
| | ii. Space size | : = (+-) 3,600 Sft. |
| d. Conference Hall Area detail | i. Floor Height normal | : |
| | without Ver | : = (+-) 5,000 Sft. |
| e. BollingSpace Area detail | i. Floor Height Double | : - |
| | ii. Space size | : = (+-) 1,500 Sft |
| g. 3 fit wide Live fishing Lake for each corridor both side | | : = (+-) 3,500Sft |

14th Floor

Facilities : Cineplex, Food Court, Amateur Games/Stadium, Conference Hall, Balling Space, Mini Theater, Bar, Ladies Recreation Area. etc.

| | | |
|----------------------------------|-----------------------------|--------------------|
| f. Mini Theater Area detail | i. Floor Height as required | : - |
| | ii. Space size | : = (+-) 2,500 Sft |
| | iii. Capacity | : = (+-) 80 Seats |
| g. Bar Area detail | i. Floor Height normal | : - |
| | ii. Space size | : = (+-) 2,000 Sft |
| h. Ladies Recreation area detail | i. Floor Height Double | : - |
| | ii. Space size | : = (+-) 1,000 Sft |
| i. Lift Lobby Area | | : = (+-) 900 Sft |

15th Floor

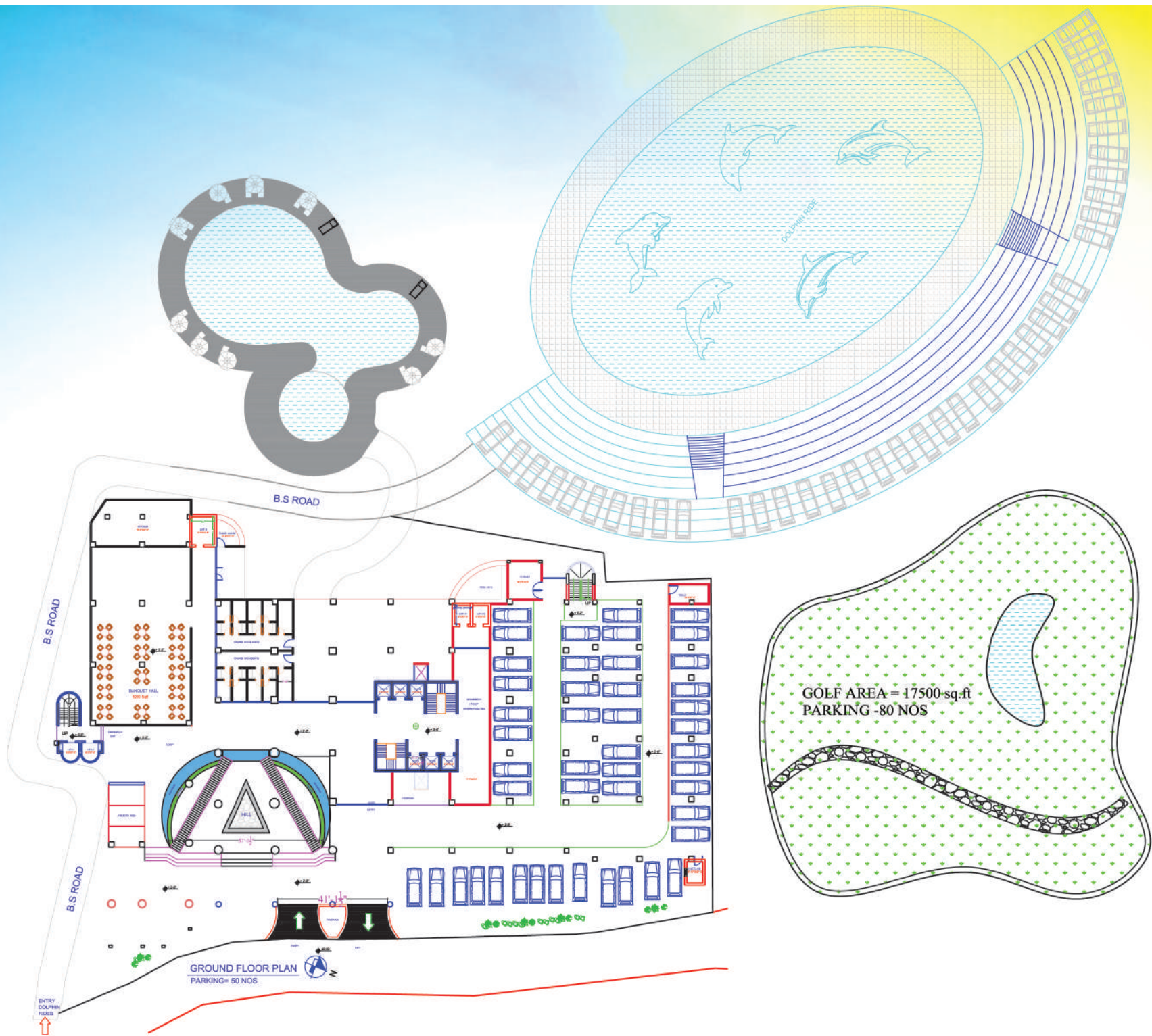
| | |
|--------------------------------------|--|
| Facilities | : Cineplex (upperheight), Children Playarea,A mateur Games/ Stadium, Balling Space (upper height), Open DJ Floor, Ladies Recreation Area. Swimming Pool, etc. |
| a. Cineplex Area detail | i. Floor Height as required (upper Part) : - ii. Space Size : = (+-) 5,500 Sft. iii. Capacity : = (+-) 600 Seats |
| b. Children play Area detail | i. Floor Height normal : - ii. Space size : = (+-) 4,100 Sft |
| c. Amateur Games/ Stadium Area detai | i. Floor Height Double : ii. Space Size : = (+-) 7,200 Sft iii. Capacity : = (+-) 800 Seats |
| d. Bolling Space Area detail | i. Floor Height Double : - ii. SpaceSize : = (+-) 1,500 Sft |
| e. Open DJ Area detail | i. Floor Height-Duplex : - ii. Space Size : = (+-) 14,250 Sft iii. Perform Ground : = 16 nos iv. Capacity : = (+-) 1100 Crowed |

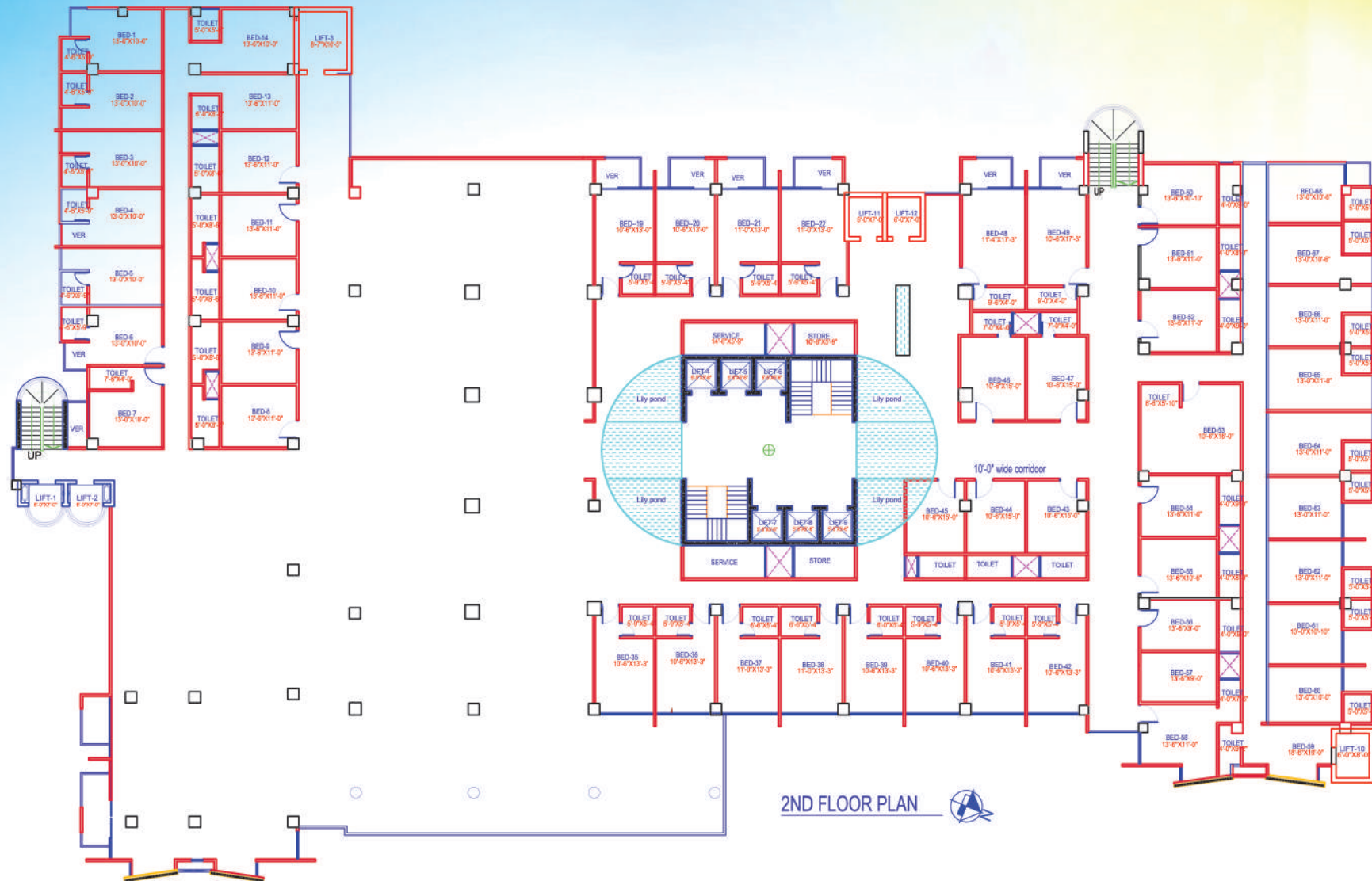
15th Floor

| | | |
|----------------------------------|---|----------------------|
| Facilities | : Cineplex (UpperPart), Children Playarea, Amateur Games / Stadium, BoilingS pace (UpperPart), Open DJ Floor, Ladies Recreation Area. Swimming Pool, etc. | |
| f. DISCO Area details | i. Floor Height - Duplex | |
| | ii. Space Size | : = (+-) 14,250 Sft. |
| | iii. Perform Ground | : = 16 nos |
| | iv. Capacity | : = (+-) 1100 Crowed |
| g. Swimming Pool Area detail | i. Floor Height-Open | : |
| | ii. Space Size | : = (+-) 3,500 Sft |
| h. Ladies Recreation area detail | i. Floor Height (Upper Part) | : |
| | ii. Space Size Duplex | : = (+-) 2,500 Sft |
| i. Lift Lobby Area | | : = (+-) 900 Sft |

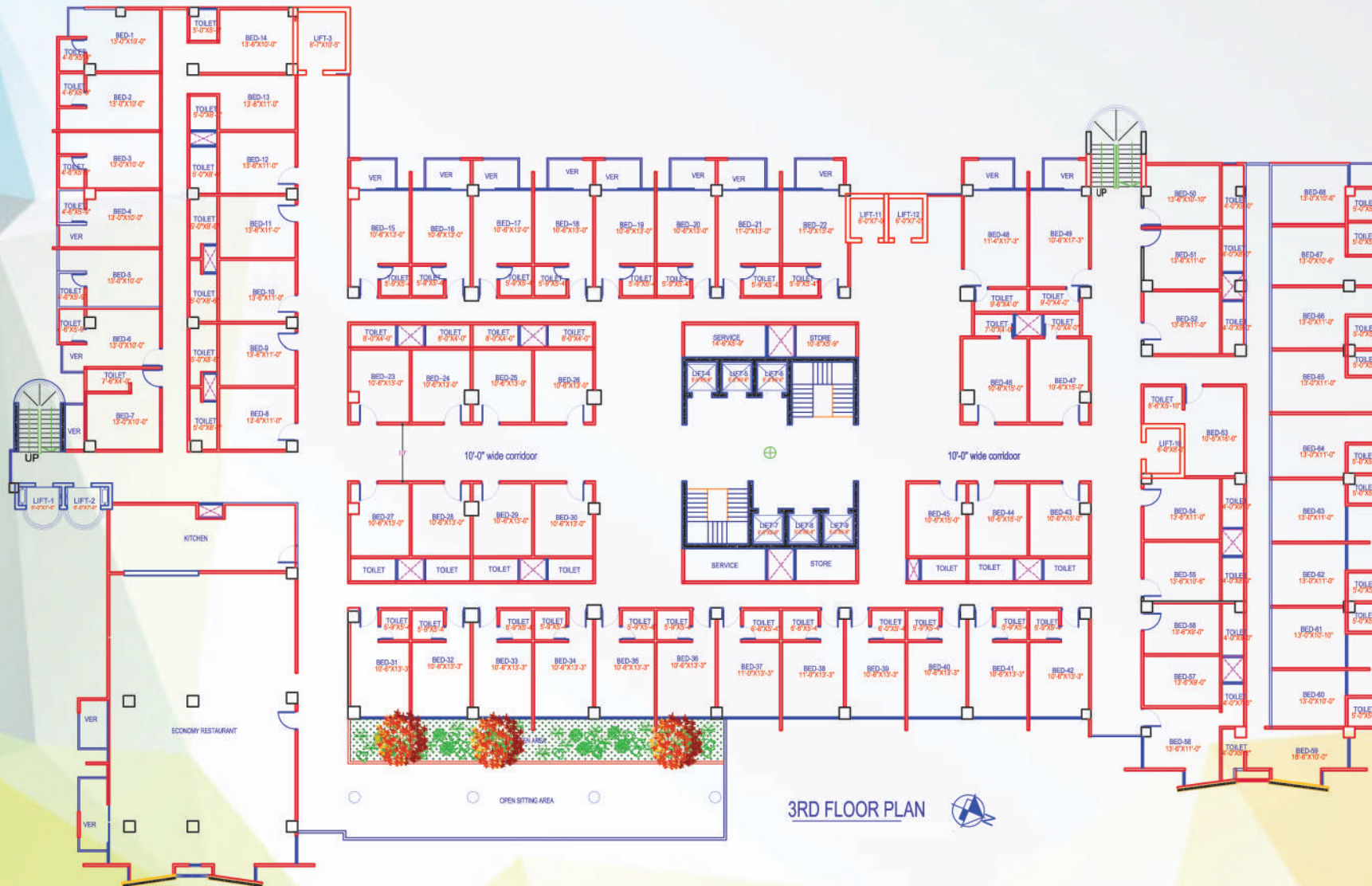
The Project Details Below

| | |
|-----------------------------------|--|
| Promotors | : Land Mine Properties Ltd. |
| Operation & Management | : 5 Star luxuries hotel brand "Hilton Garden Inn" world largest & Strongest origin hotel chain |
| Design, Engineering & Development | : Rhine Garden Inn |
| Total floor | : 16 Storied |
| Total Suites & Rooms | : 262 |
| Total Floor space | : 28500 sft |
| Open area | : 32048.40 sft |
| Meeting Area | : 3200 Sft |
| Adjacent Sea beach | : 550Fit |
| Project Approval Status | : Aailed all the regulatory & legal permissions |
| | |



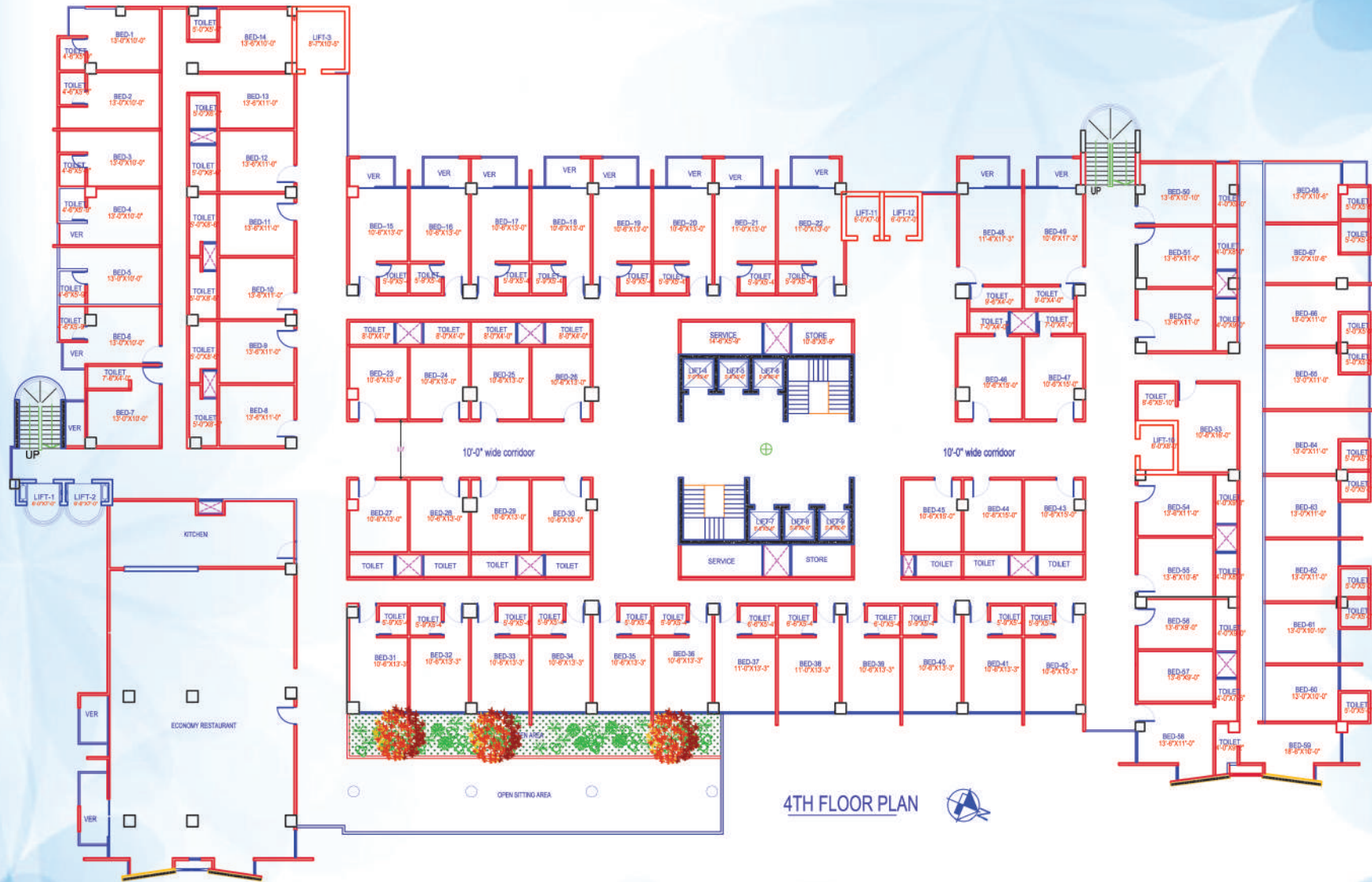


2ND FLOOR PLAN



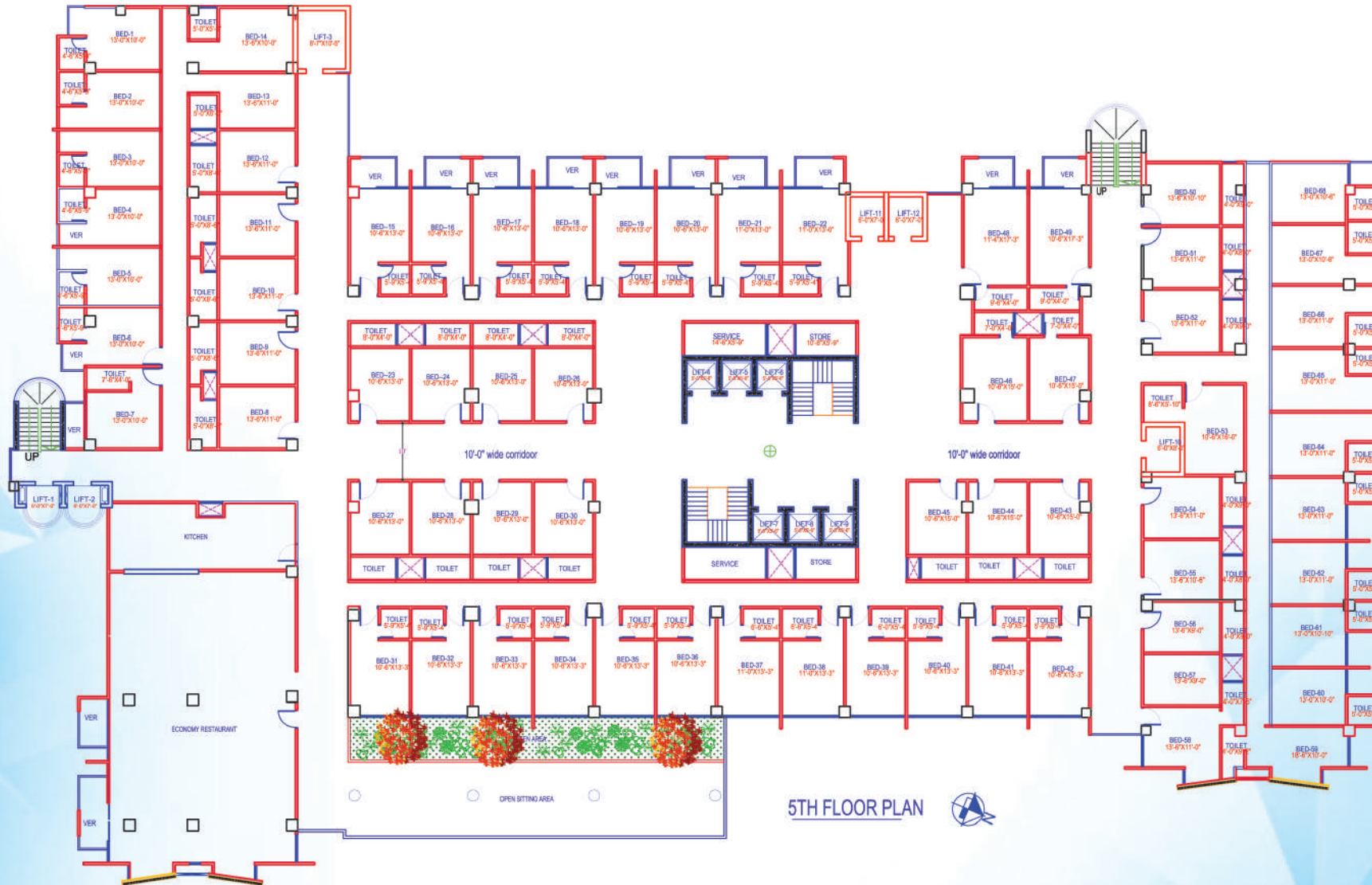
3RD FLOOR PLAN





4TH FLOOR PLAN



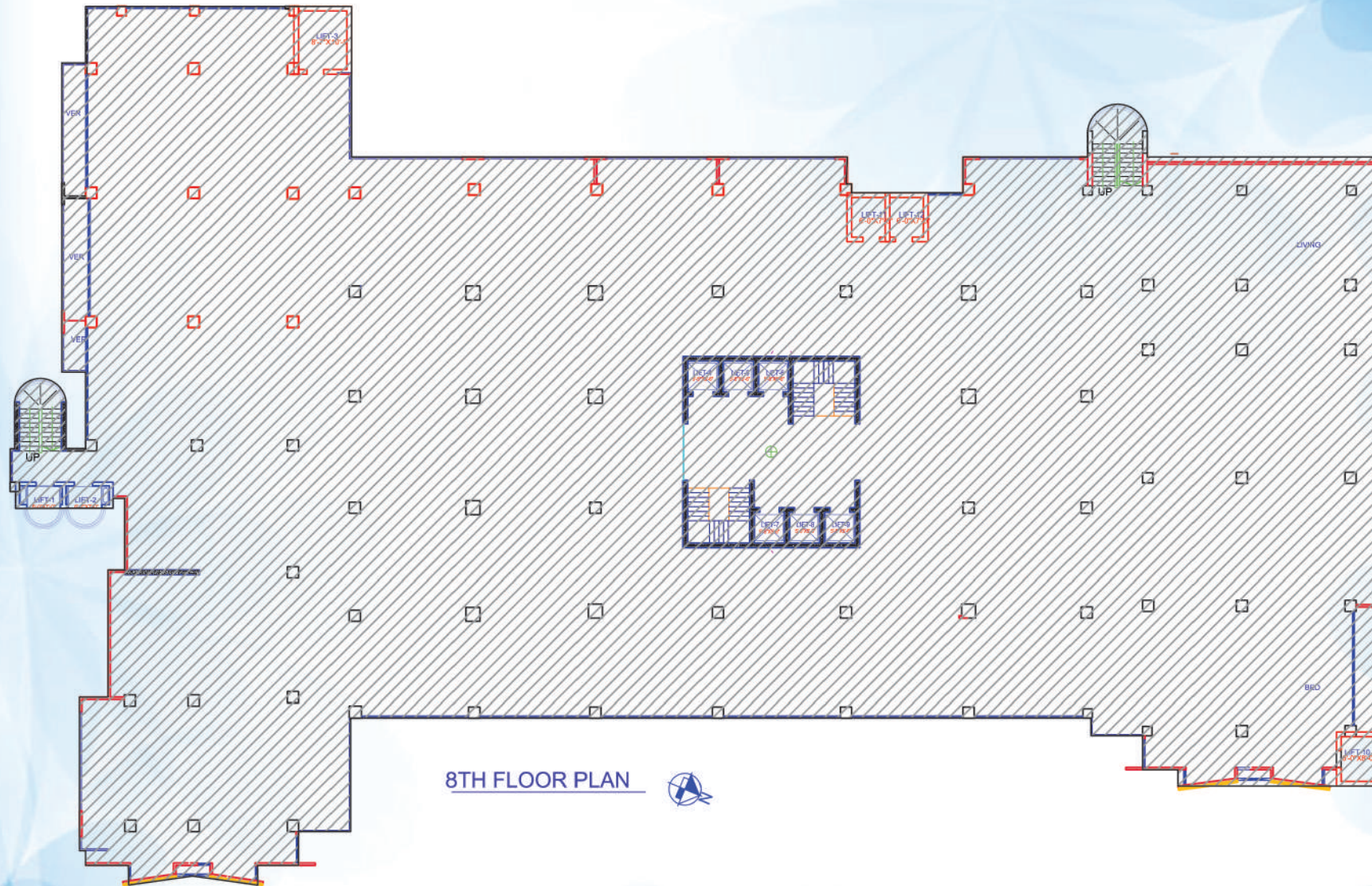


5TH FLOOR PLAN





7TH FLOOR PLAN



8TH FLOOR PLAN





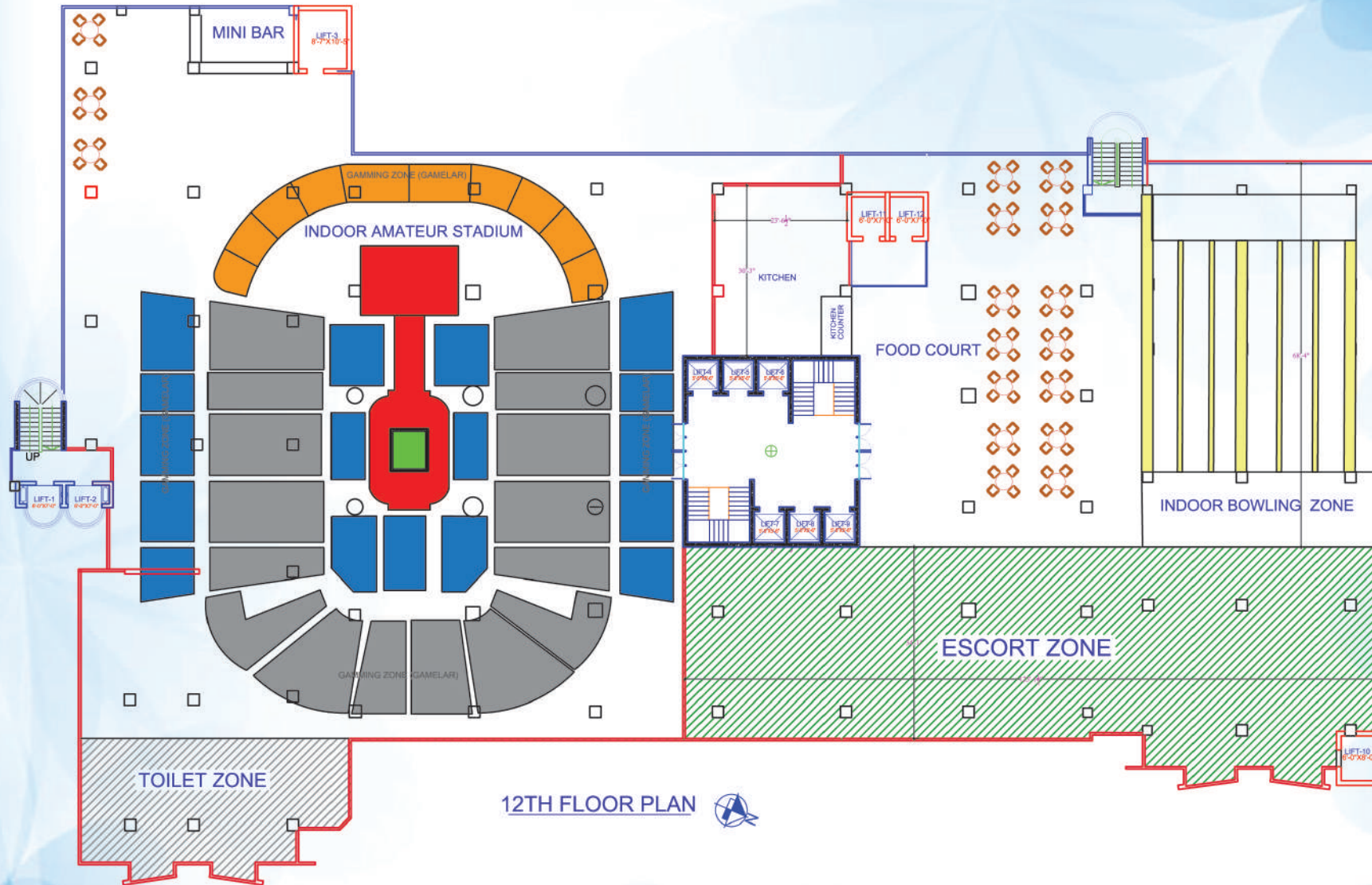
9TH FLOOR PLAN



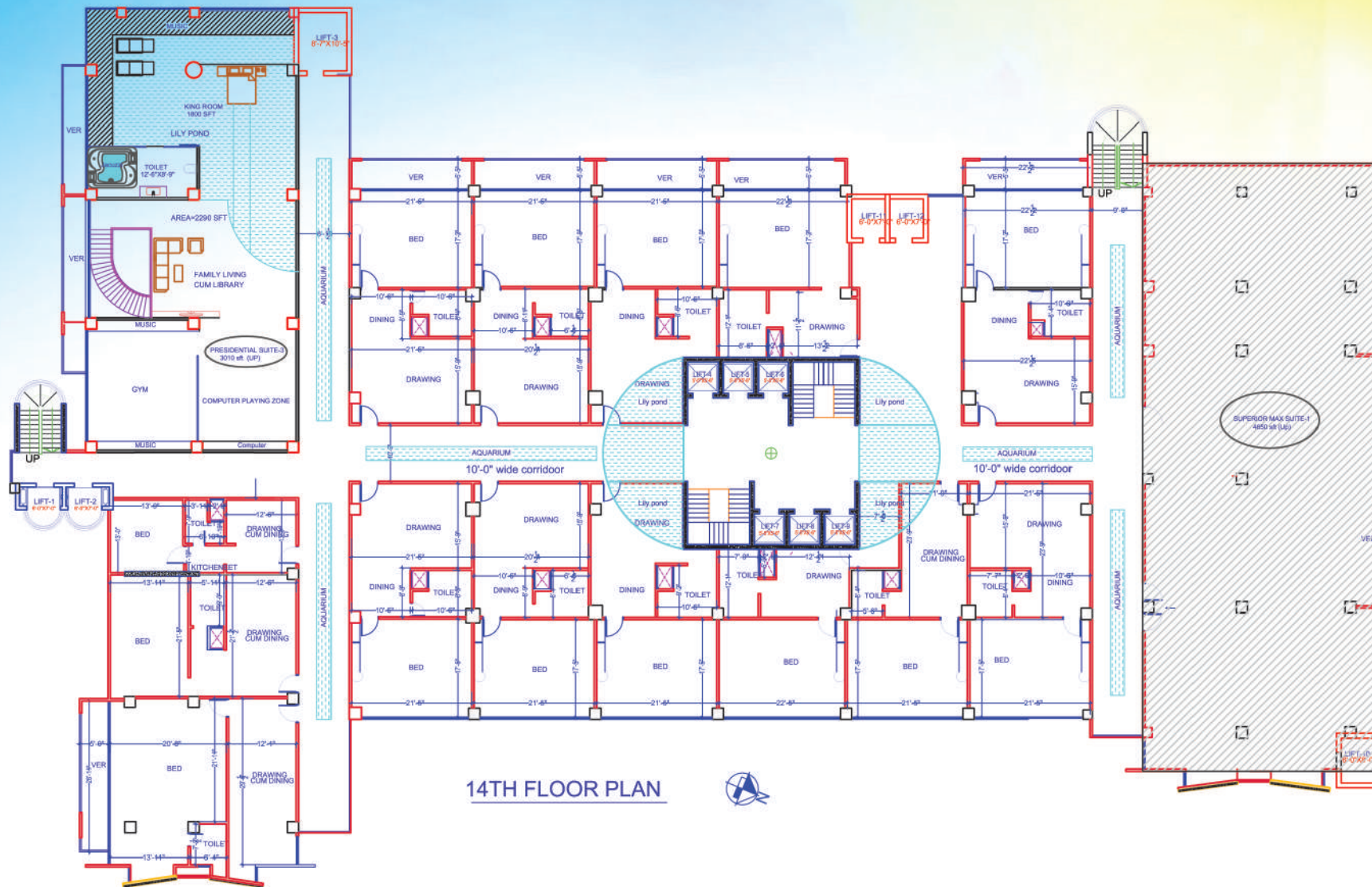




11TH FLOOR PLAN

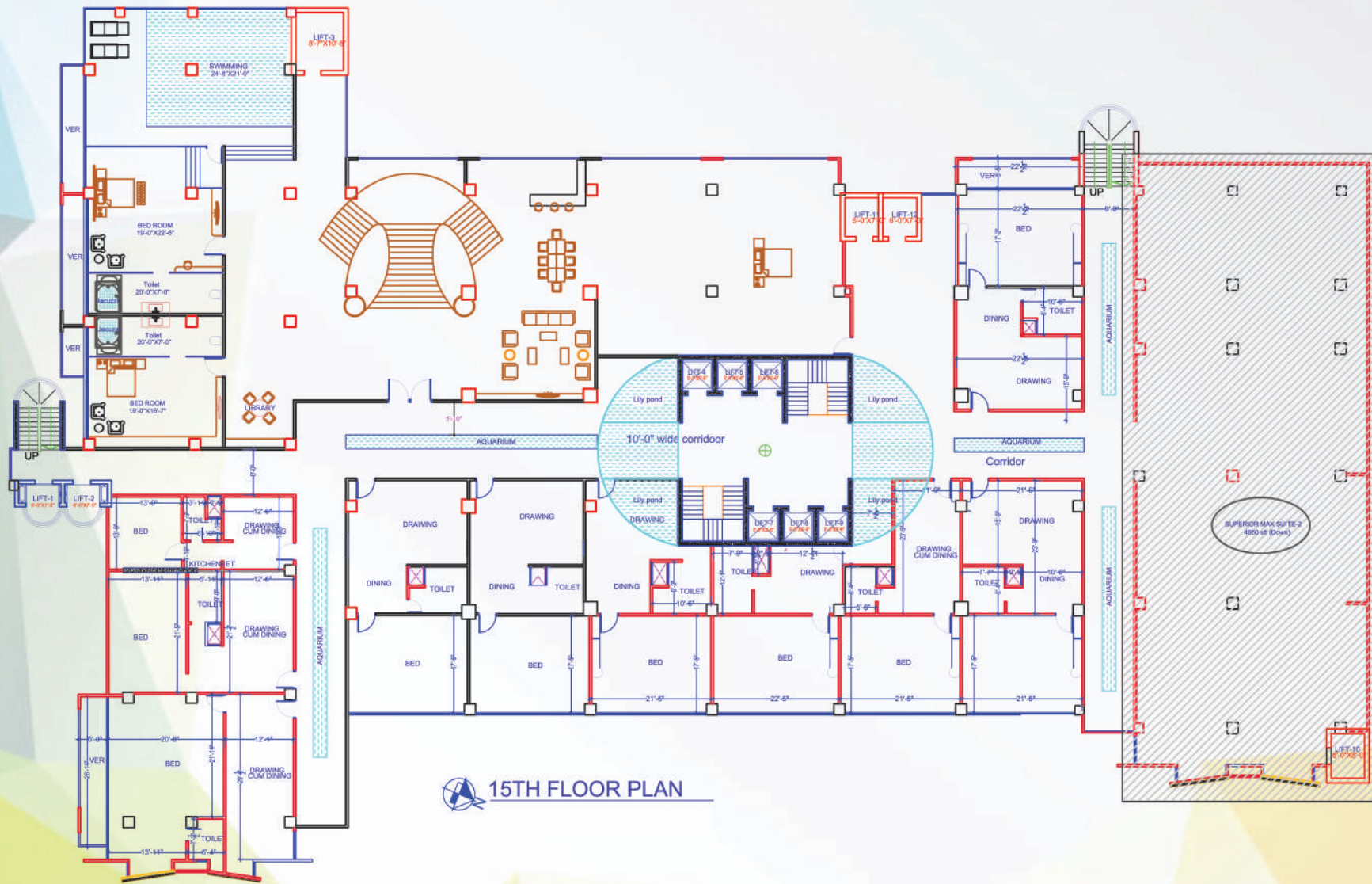


12TH FLOOR PLAN 

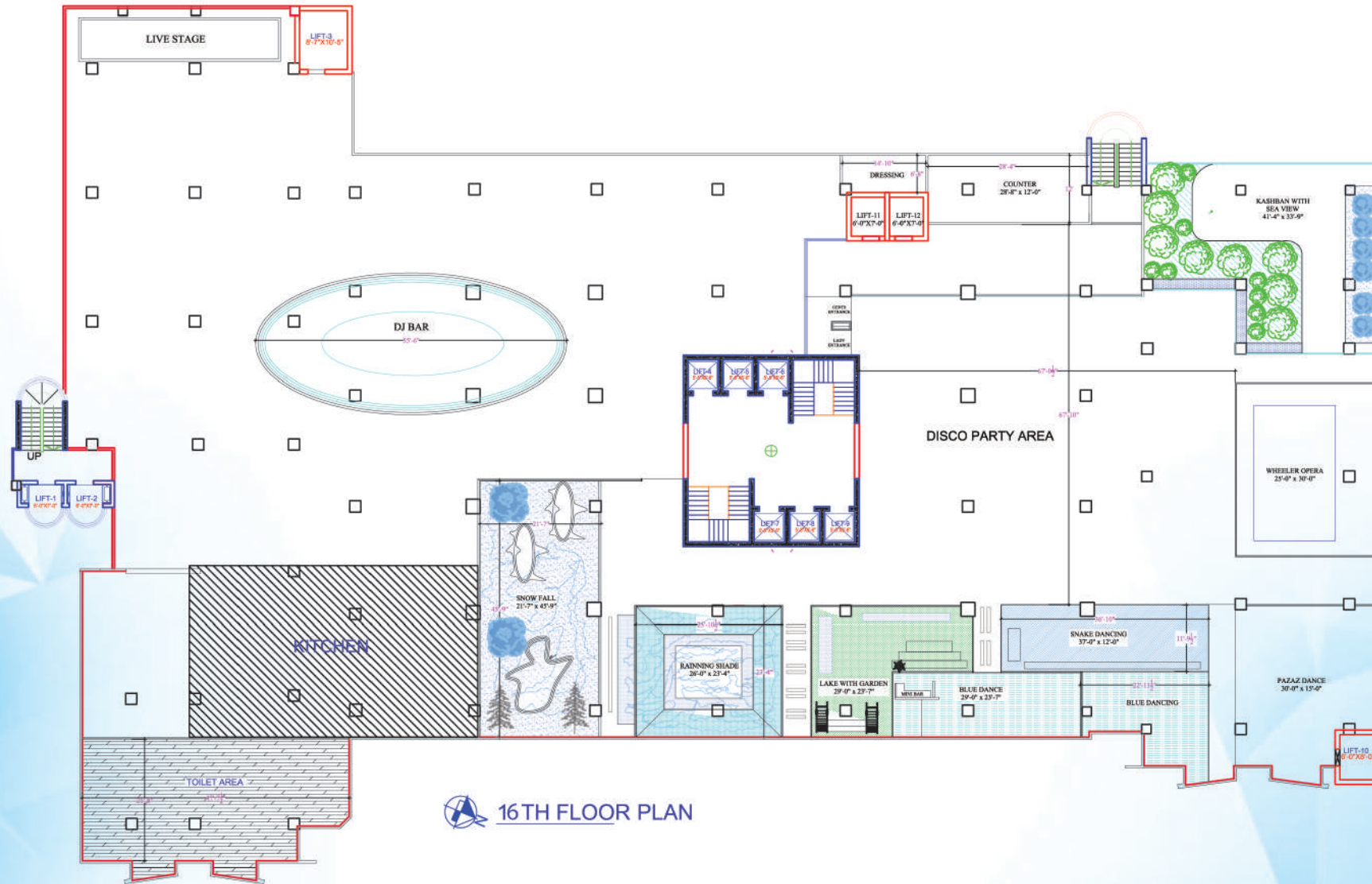


14TH FLOOR PLAN

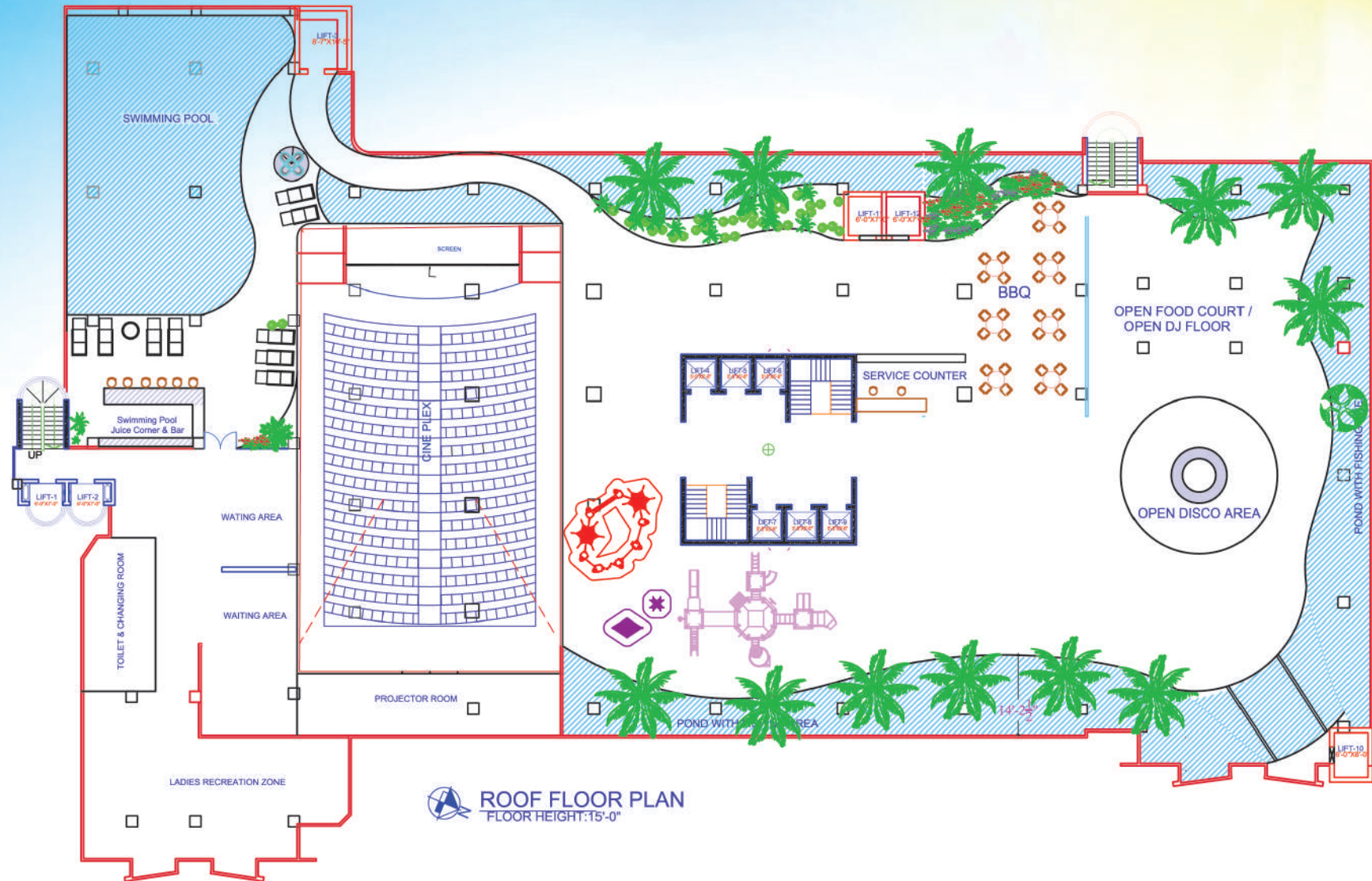




15TH FLOOR PLAN

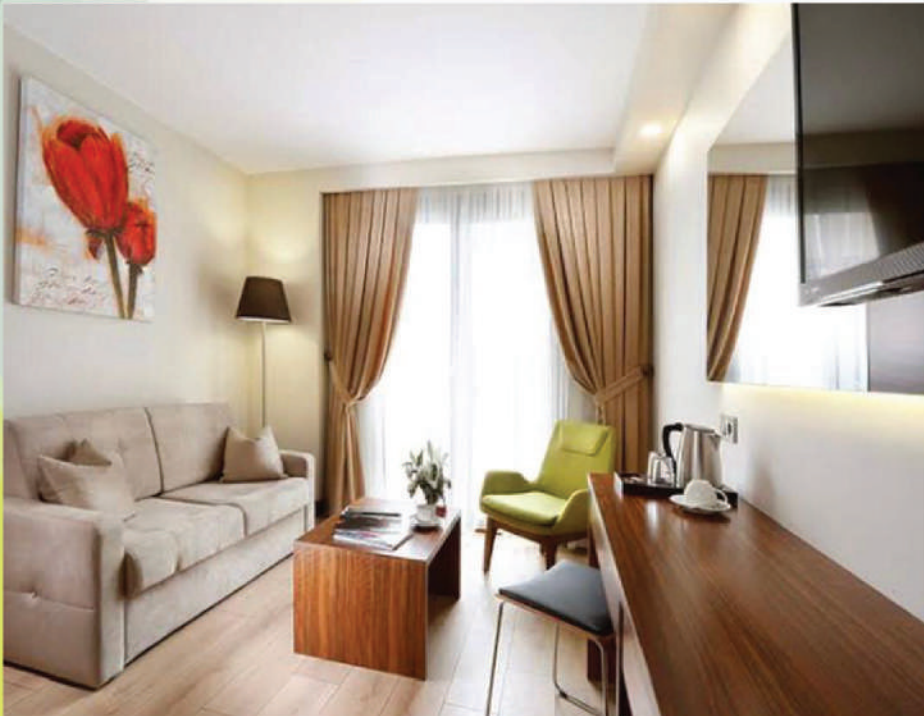


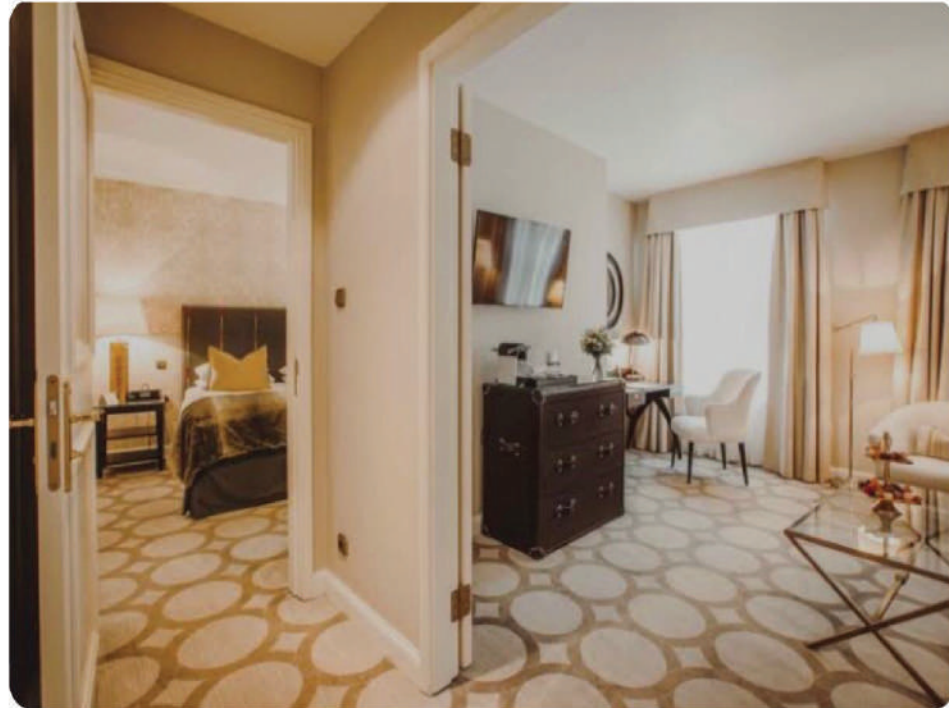
 16TH FLOOR PLAN



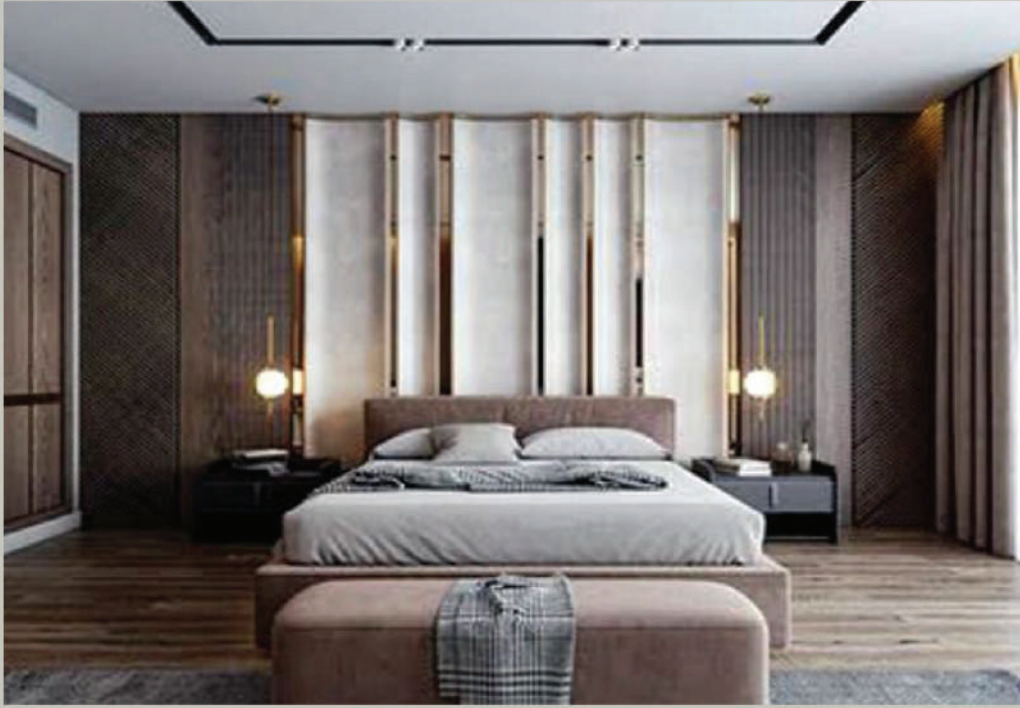
ROOF FLOOR PLAN
 FLOOR HEIGHT: 15'-0"

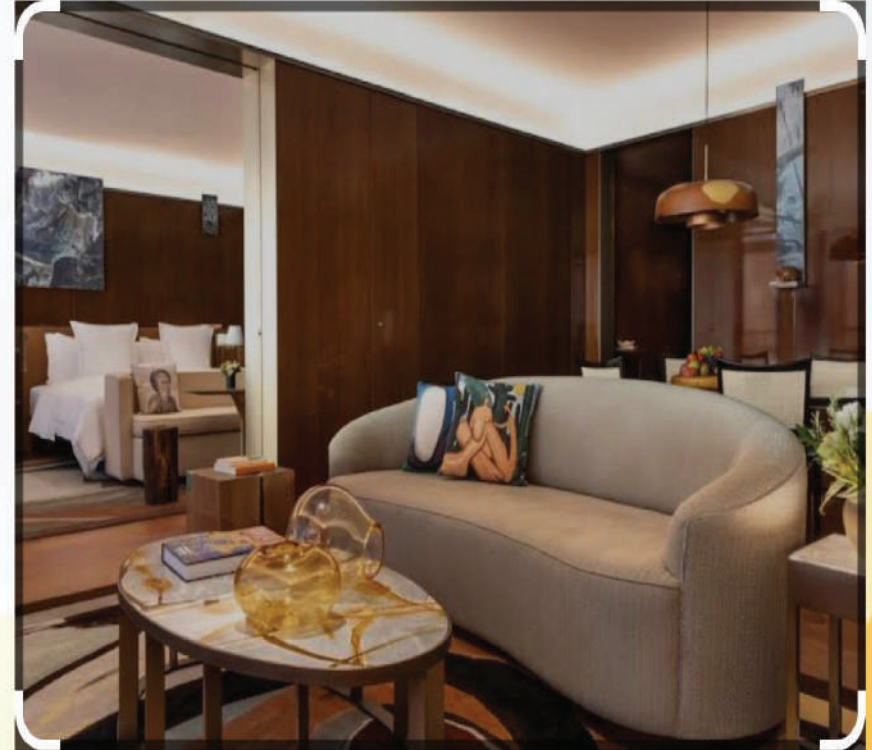
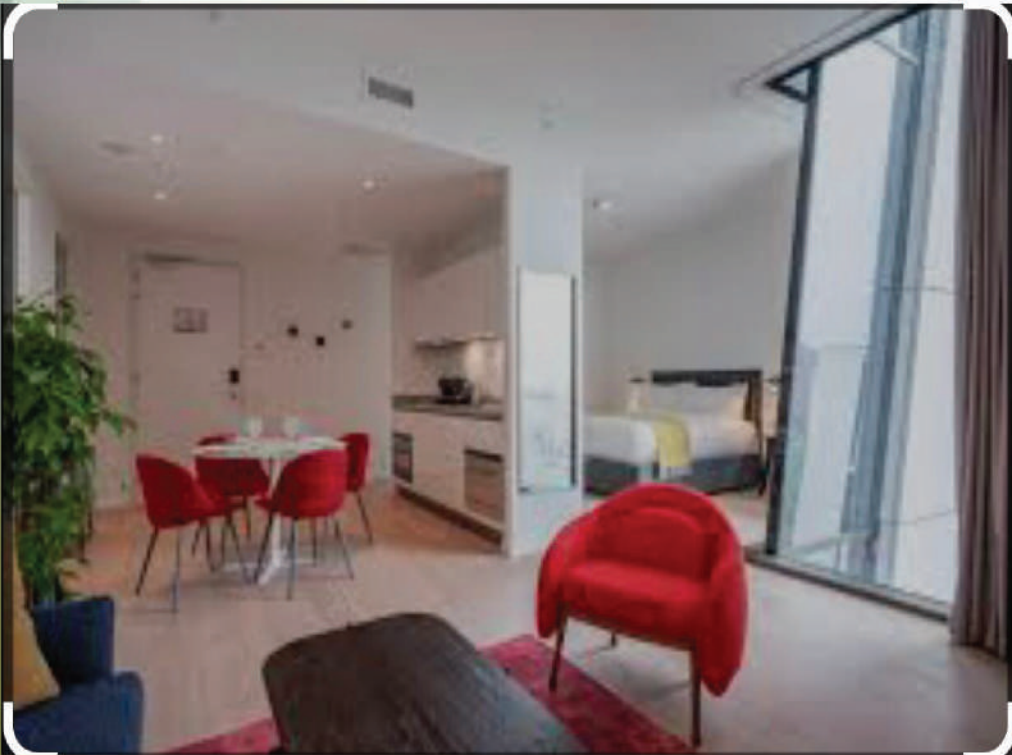


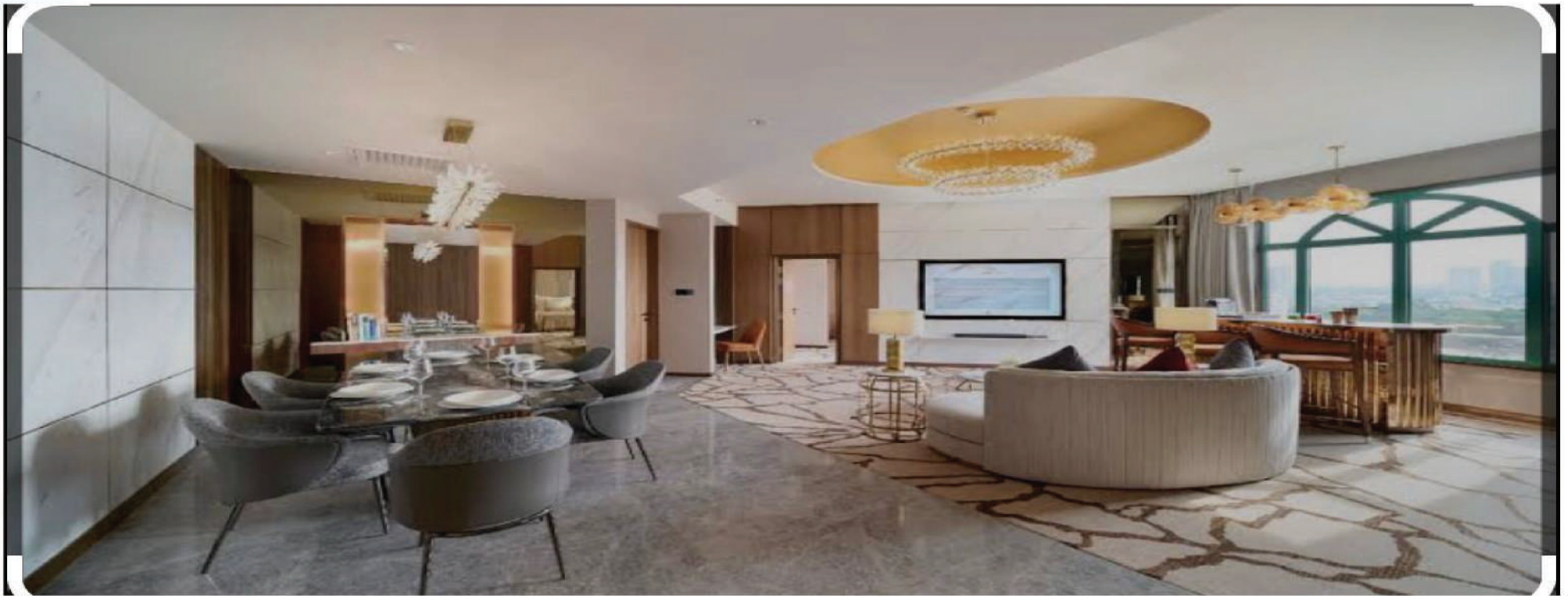


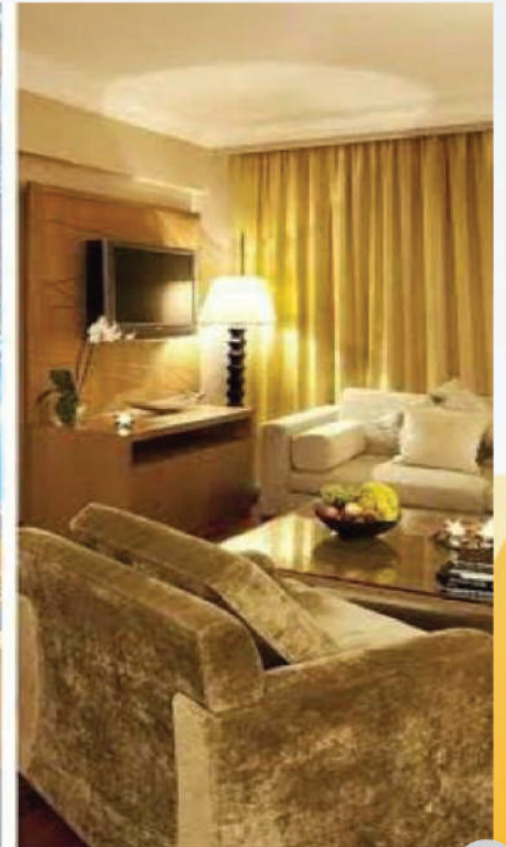


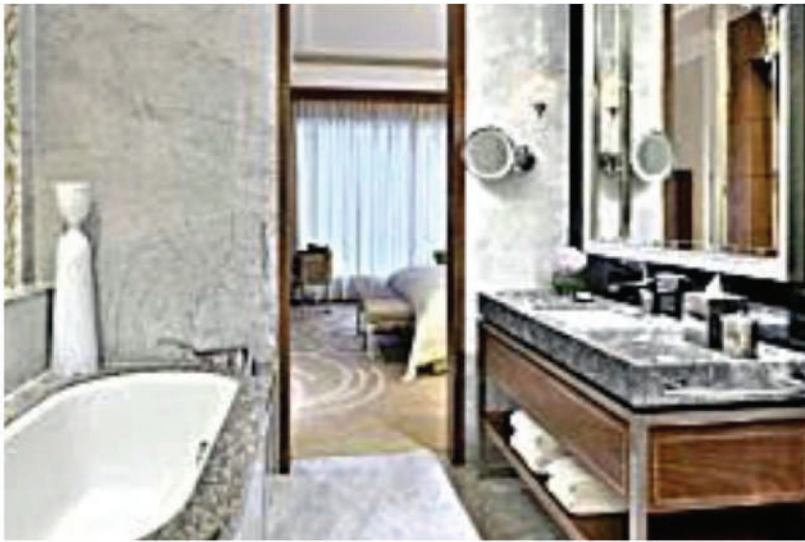


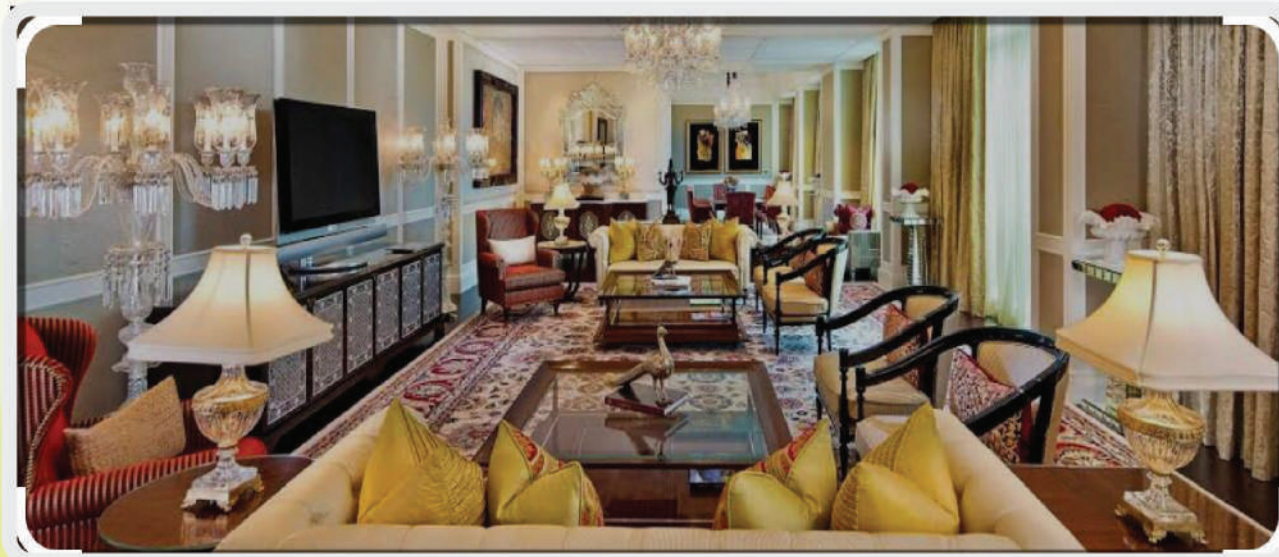
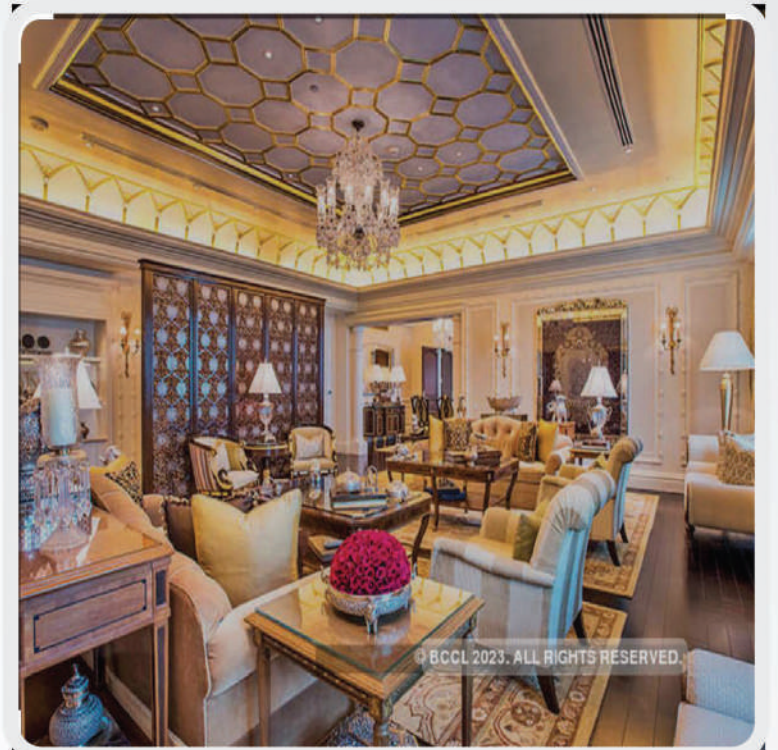
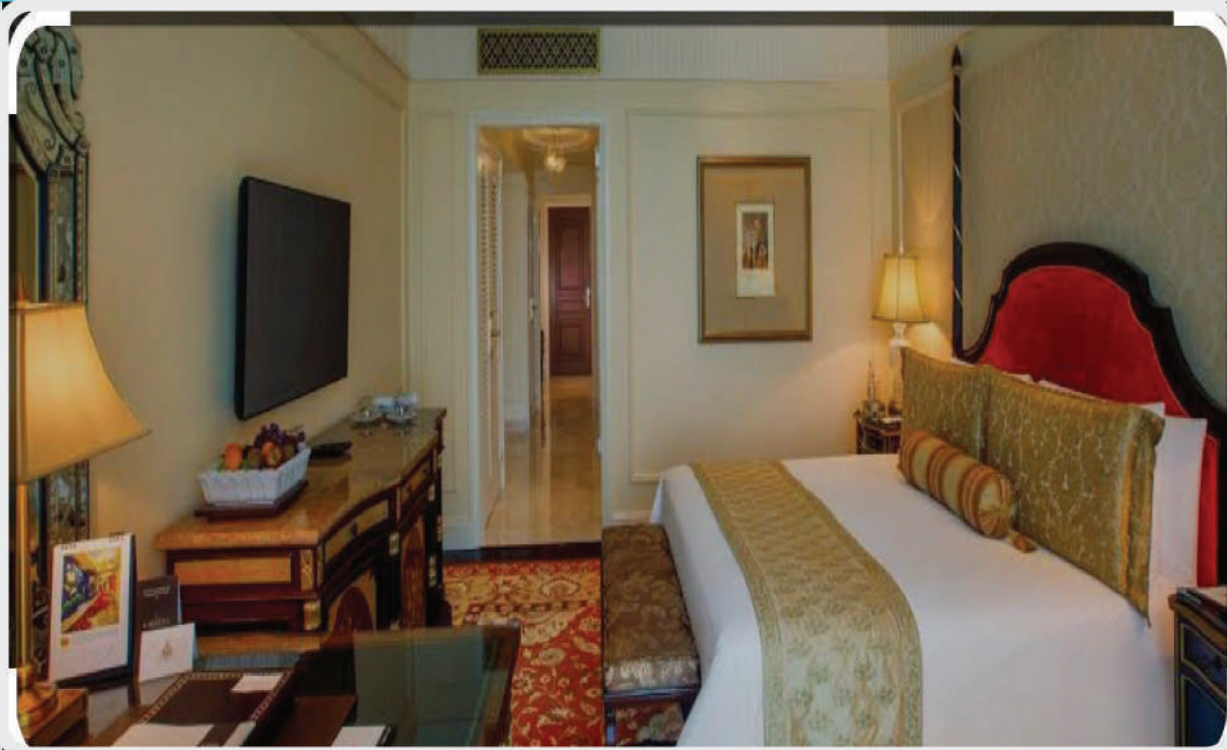




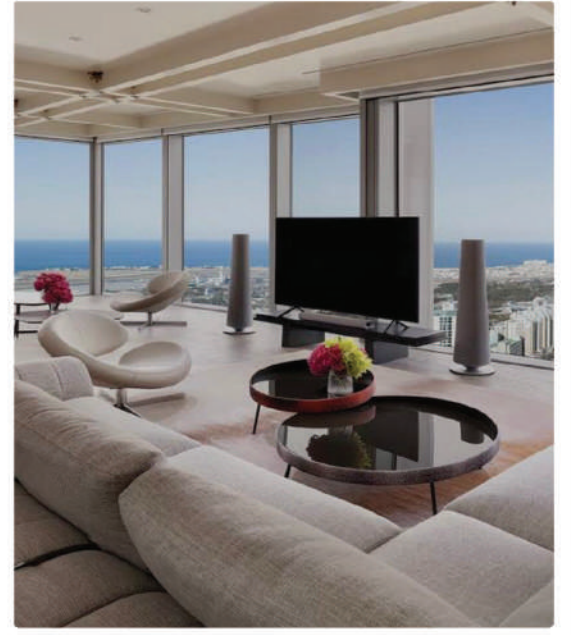
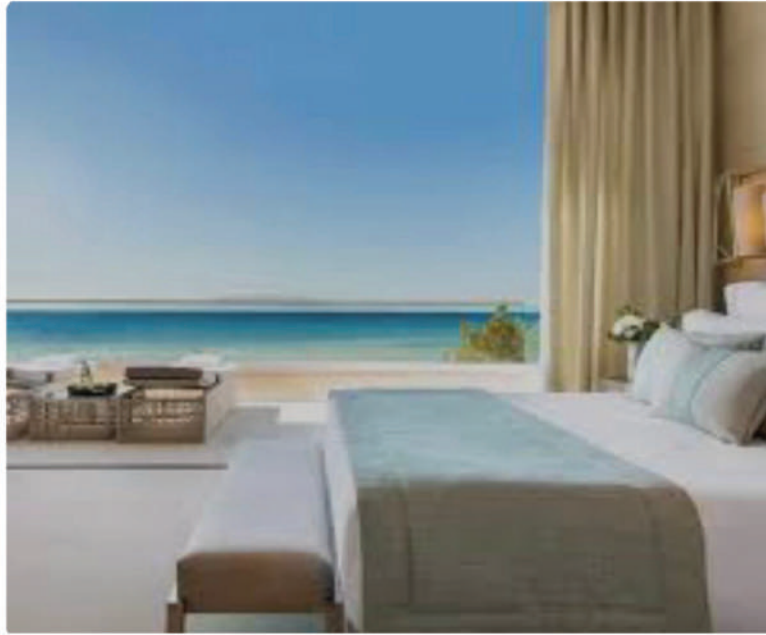




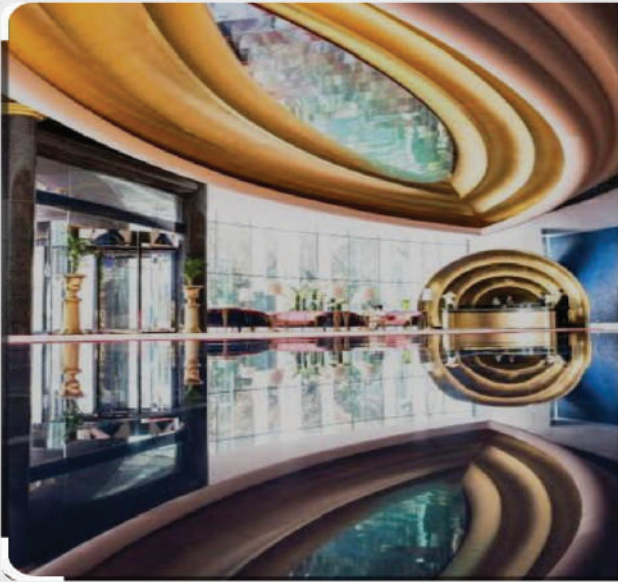




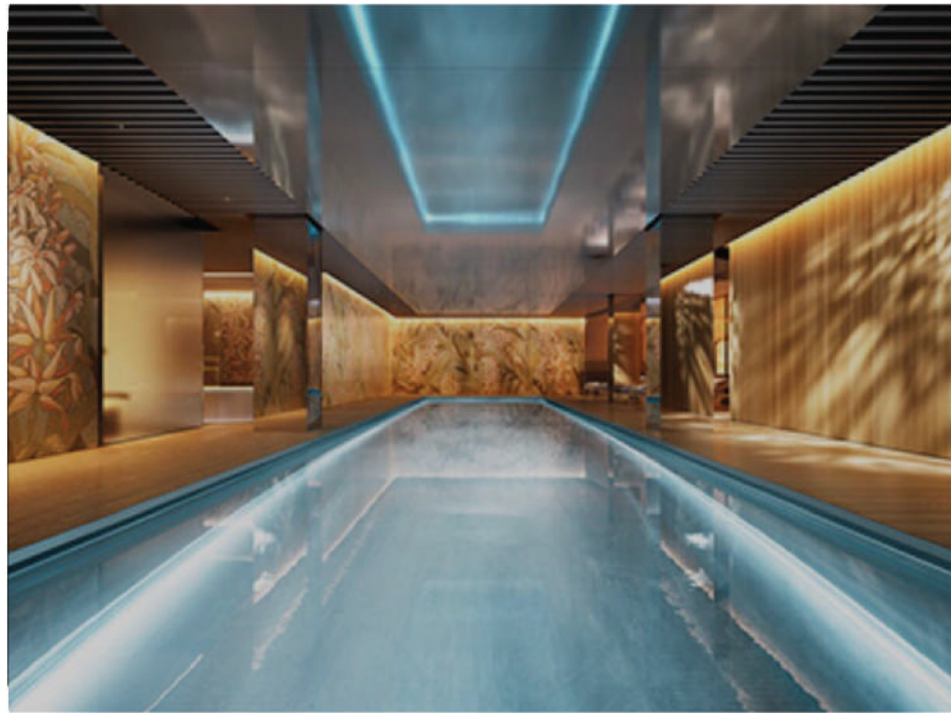
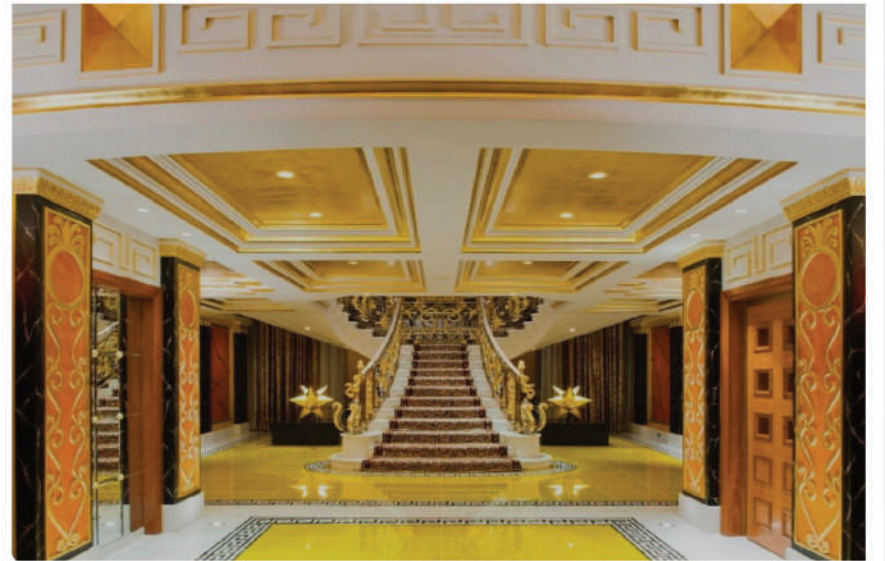








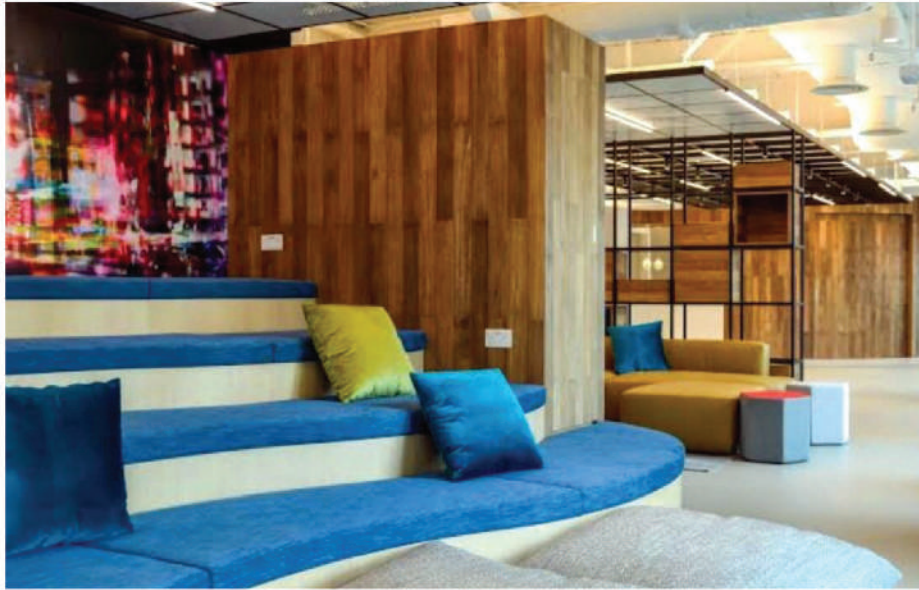












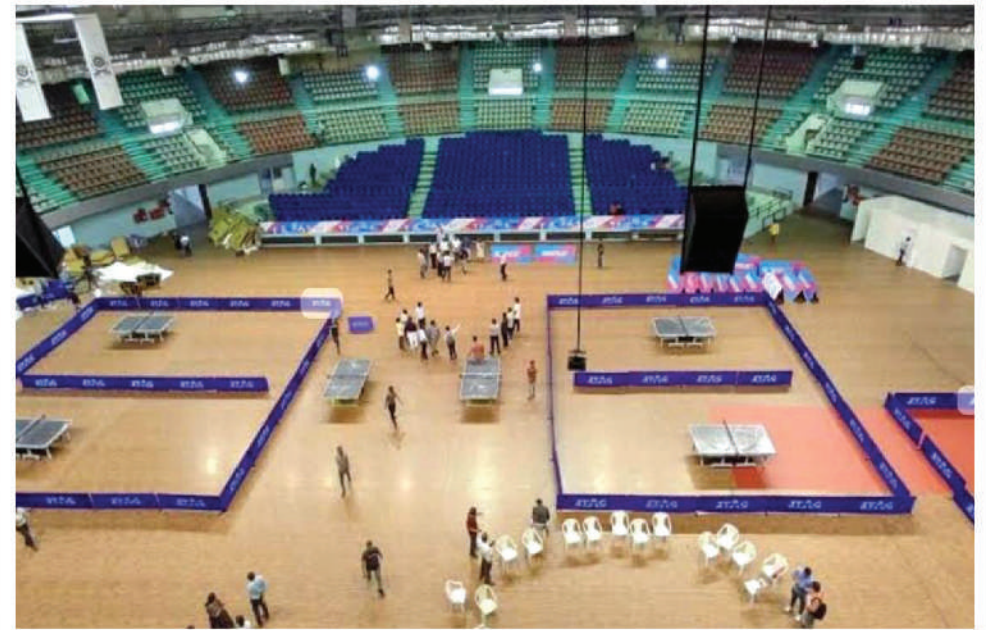
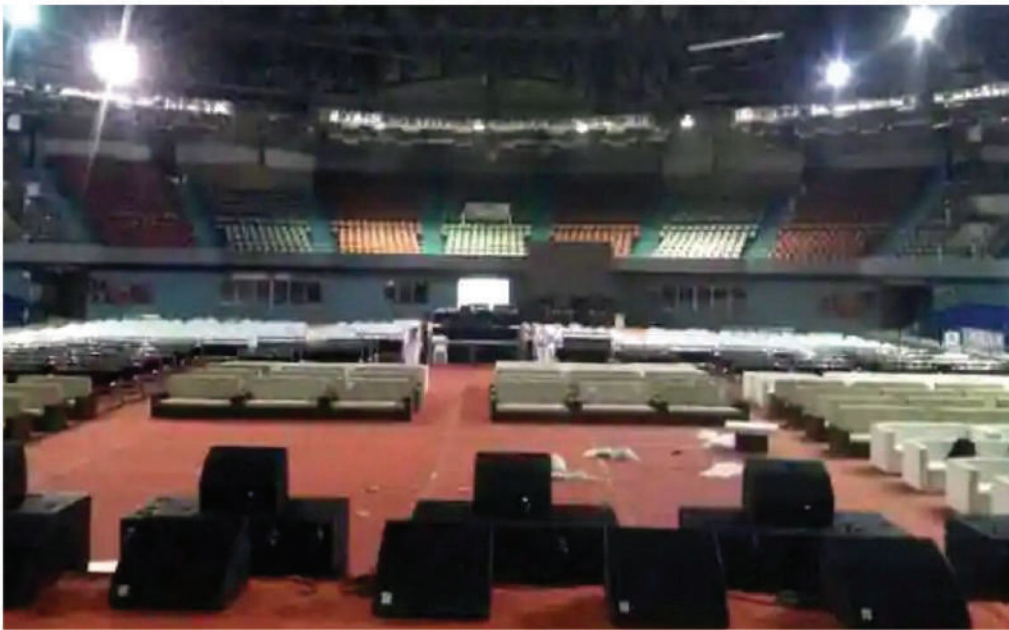
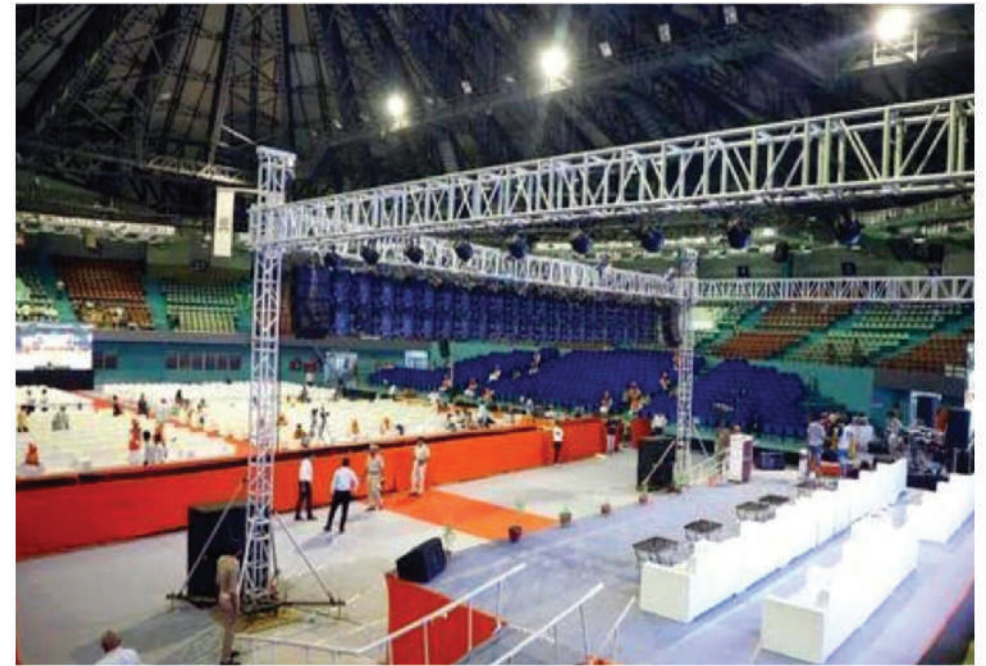


BOWLING

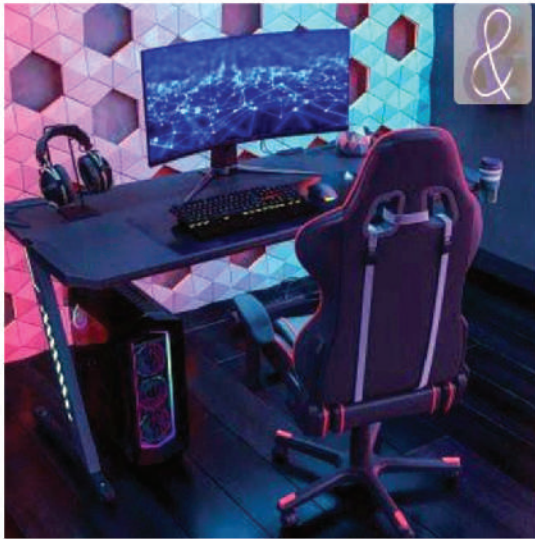














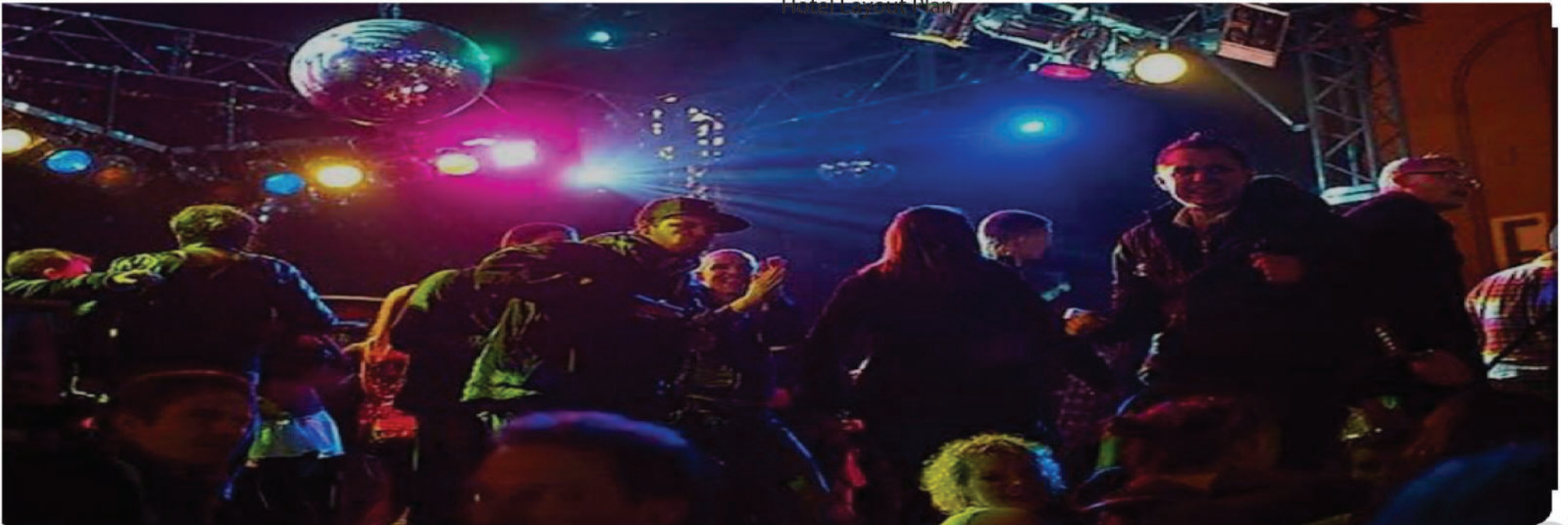


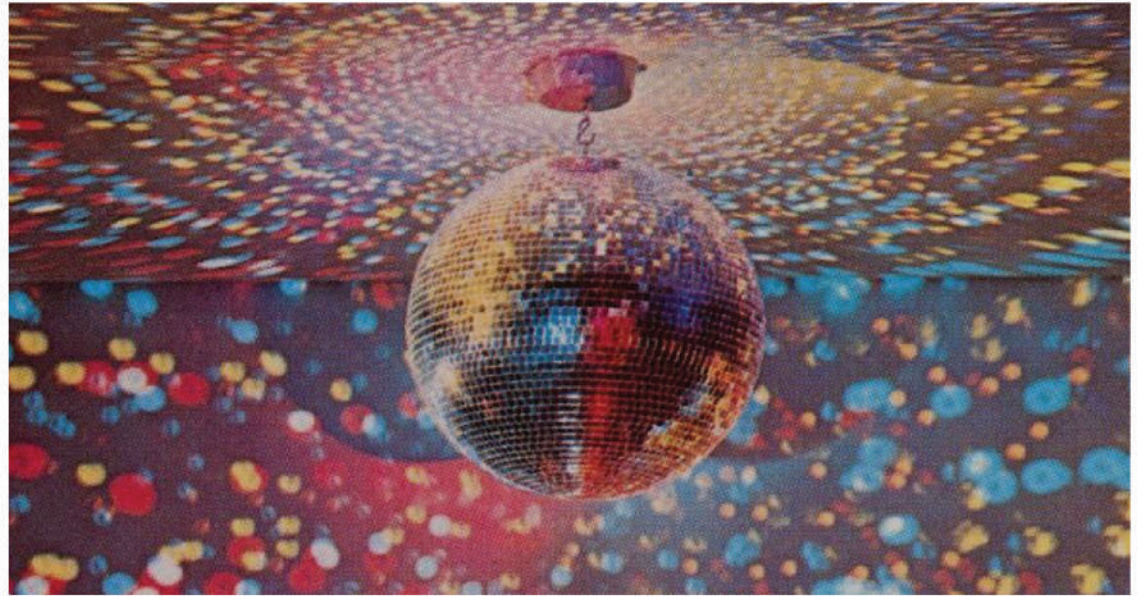


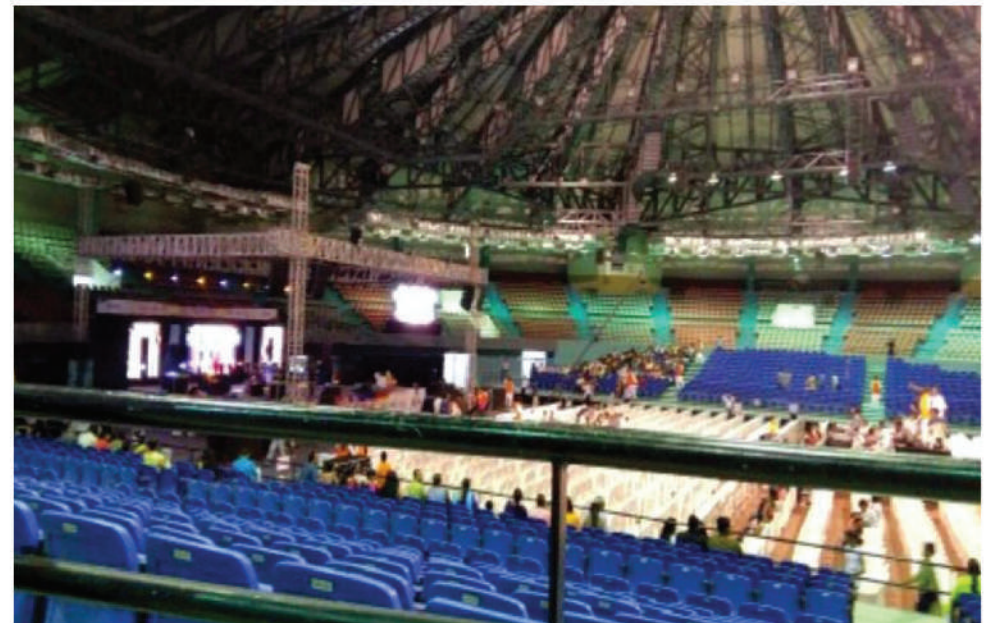
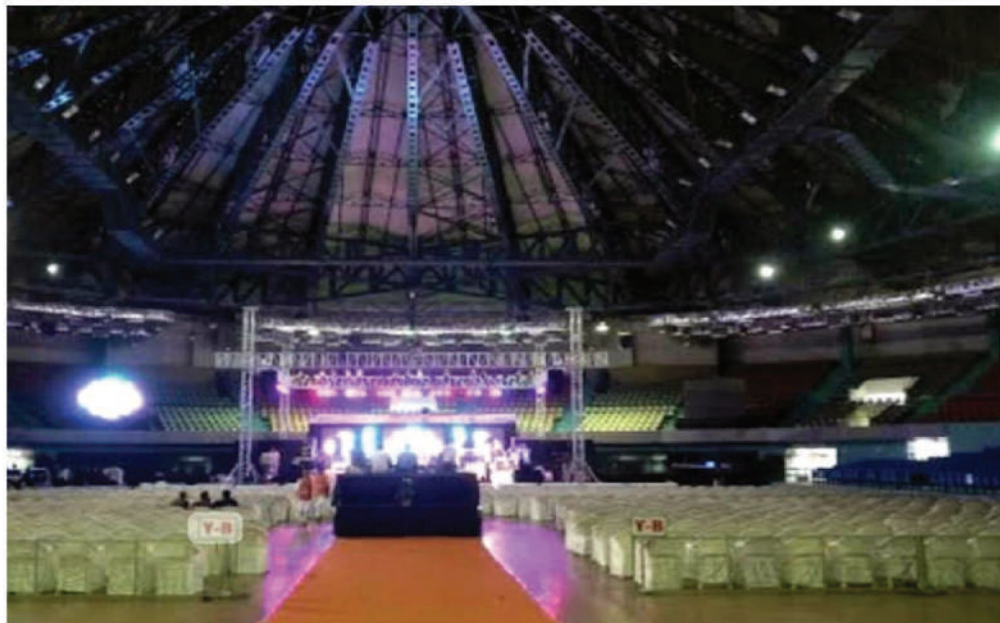


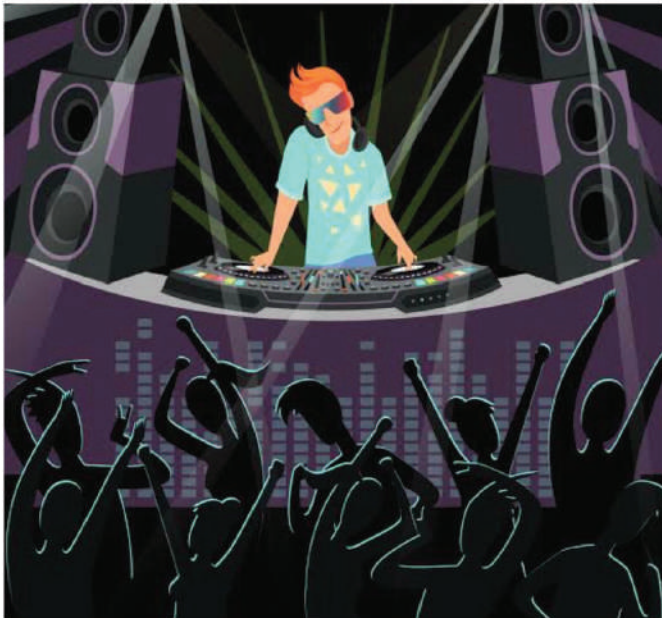


Hotel Layout Plan









Rhine

Garden Inn

Head Office:

LandMine Properties Ltd.



House # 372 (2nd Floor) Road # 28
Mohakhali DOHS, Dhaka-1206



01805-462778, 01805-462779,
01805-462780, 01805-462781
01805-462782, 01805-462783,
01805-462784, 01805-462785



info@landmineproperty.com



www.landmineproperty.com

Site Office:

Rhine Garden Inn



Kolatoli - Marine Drive Road (Near Dolphin Mor)
Kolatali, Cox's Bazar, Bangladesh.



+880 1321 192 455

